

# Balancing Water Supply and Use

Republican River Basin-Wide Plan  
December 2017 Stakeholder Meeting

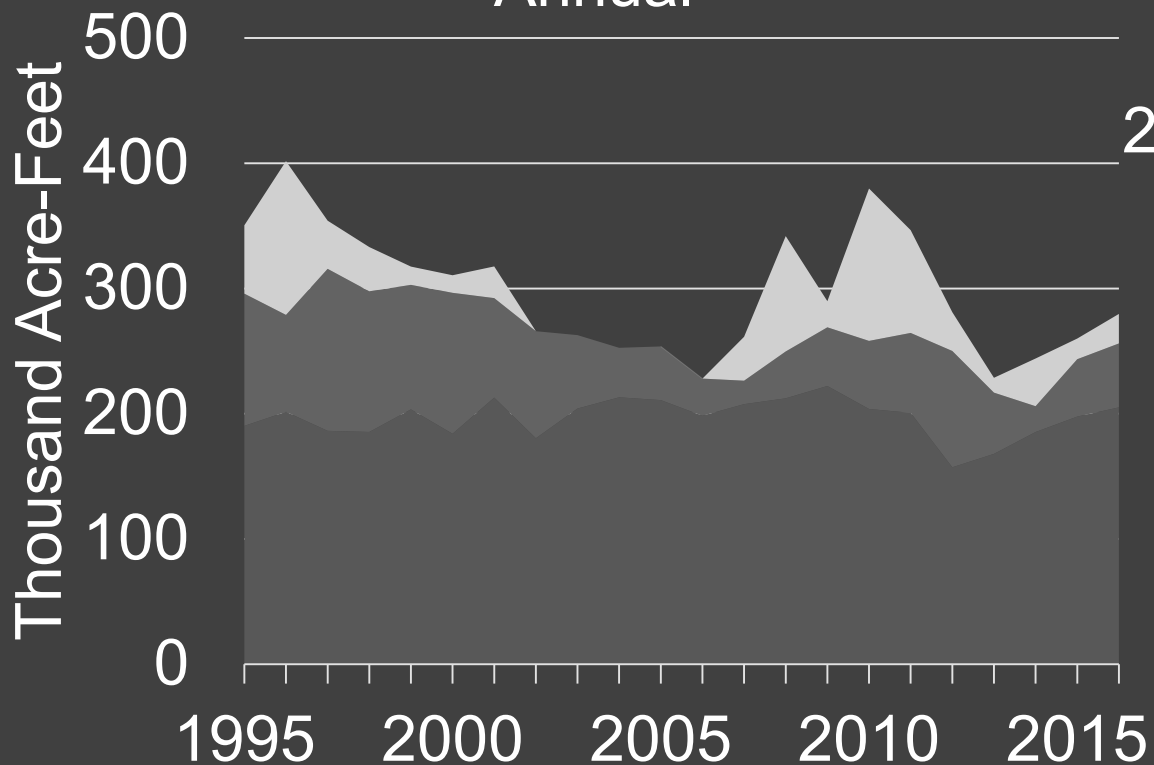
NEBRASKA

Good Life. Great Water.

DEPT. OF NATURAL RESOURCES

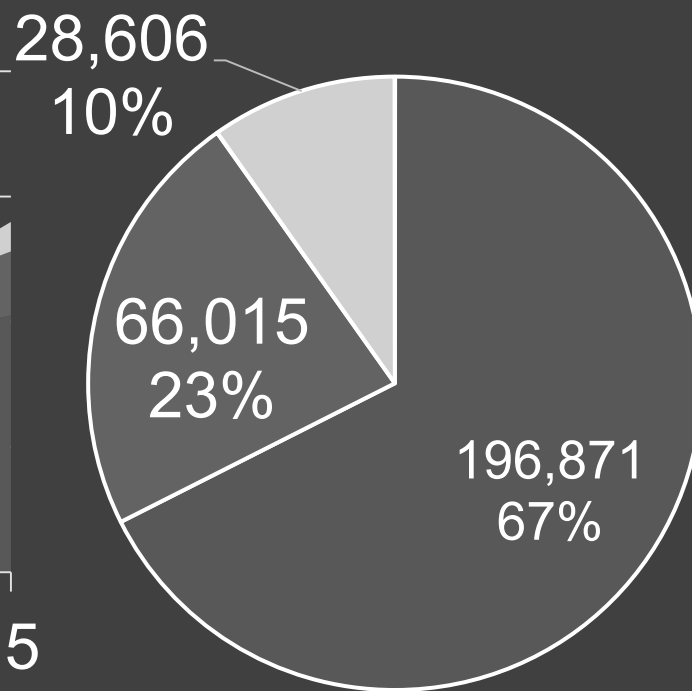
# Republican River Basin Computed Beneficial Consumptive Use (CBCU)

Annual

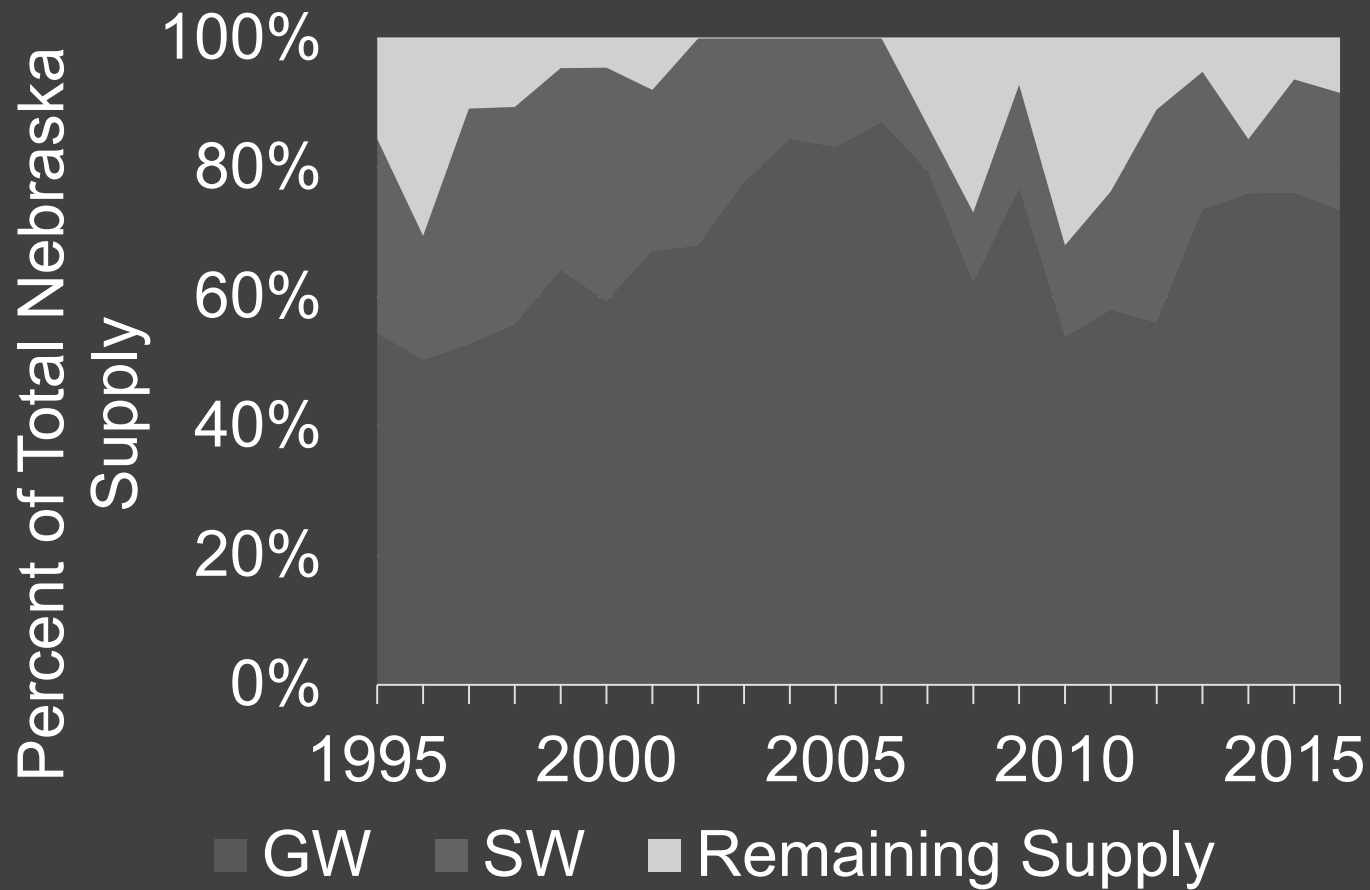


- Remaining Supply
- SW CBCU
- GW CBCU

Average (1995-2016)

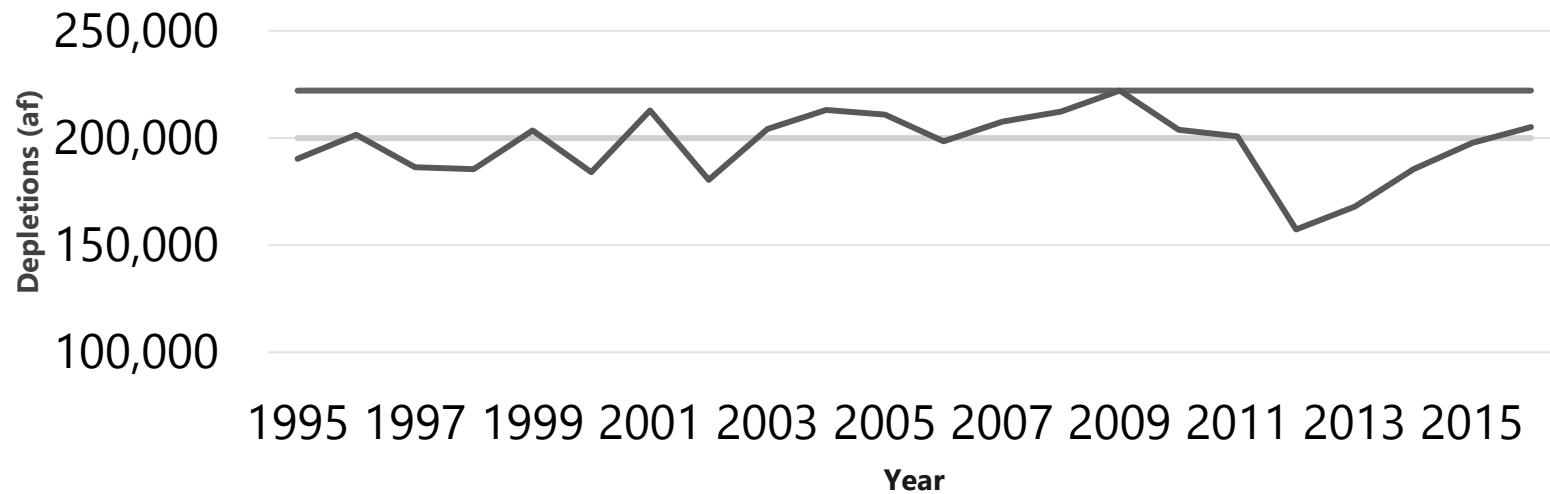


# Republican River Basin CBCU



# 10% Reduction in Streamflow Depletions Example A

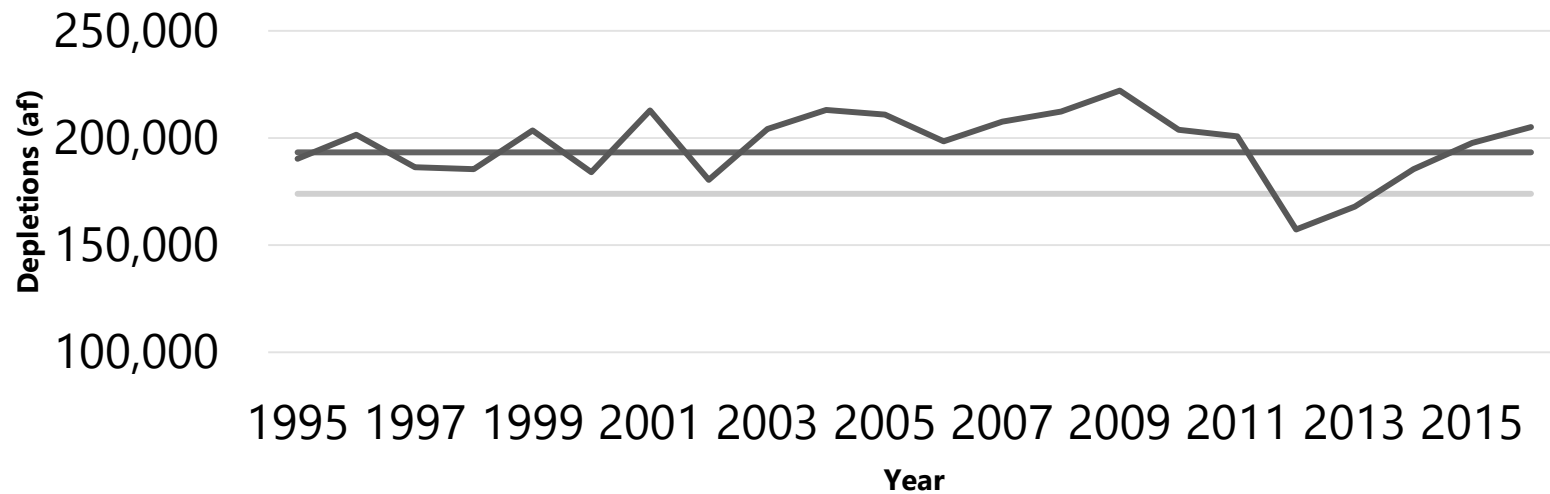
## Highest Single Year Streamflow Depletion



- Highest Single Year Depletions (222,154 af)
- 10% Reduction in Depletions (199,939 af)
- Compact Accounting Groundwater CBCU (Depletions)

# 10% Reduction in Streamflow Depletions Example B

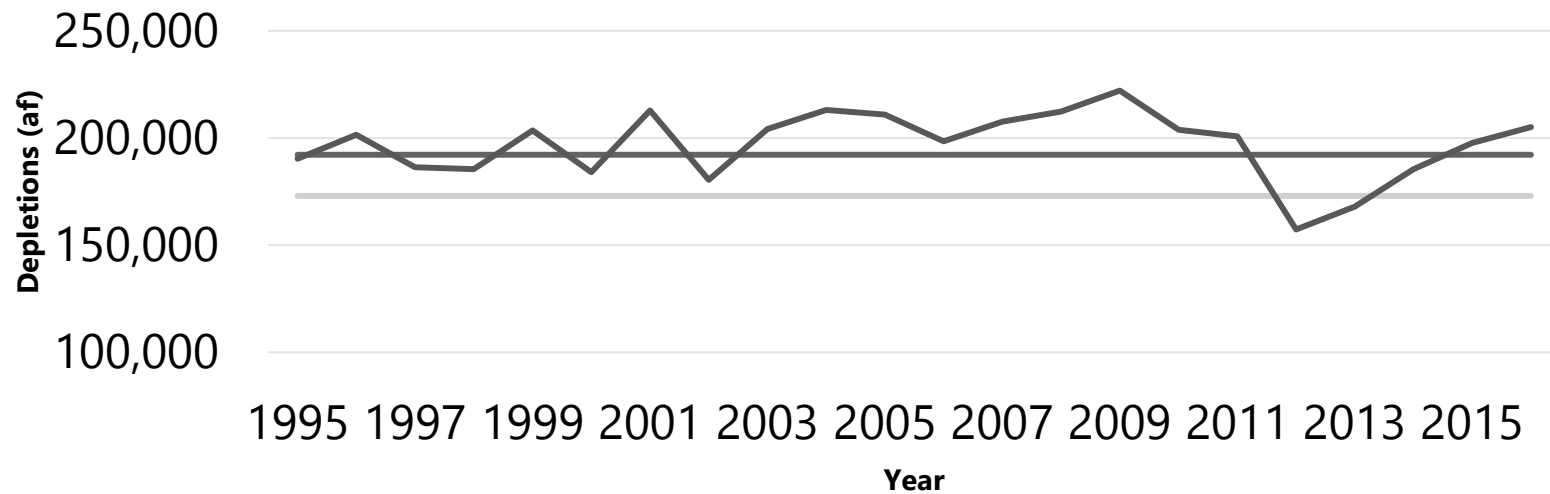
## 1998-2002 Average Streamflow Depletions



- 1998-2002 Average Depletions (193,255 af)
- 10% Reduction of 1998-2002 Average Depletions (173,930 af)
- Compact Accounting Groundwater CBCU (Depletions)

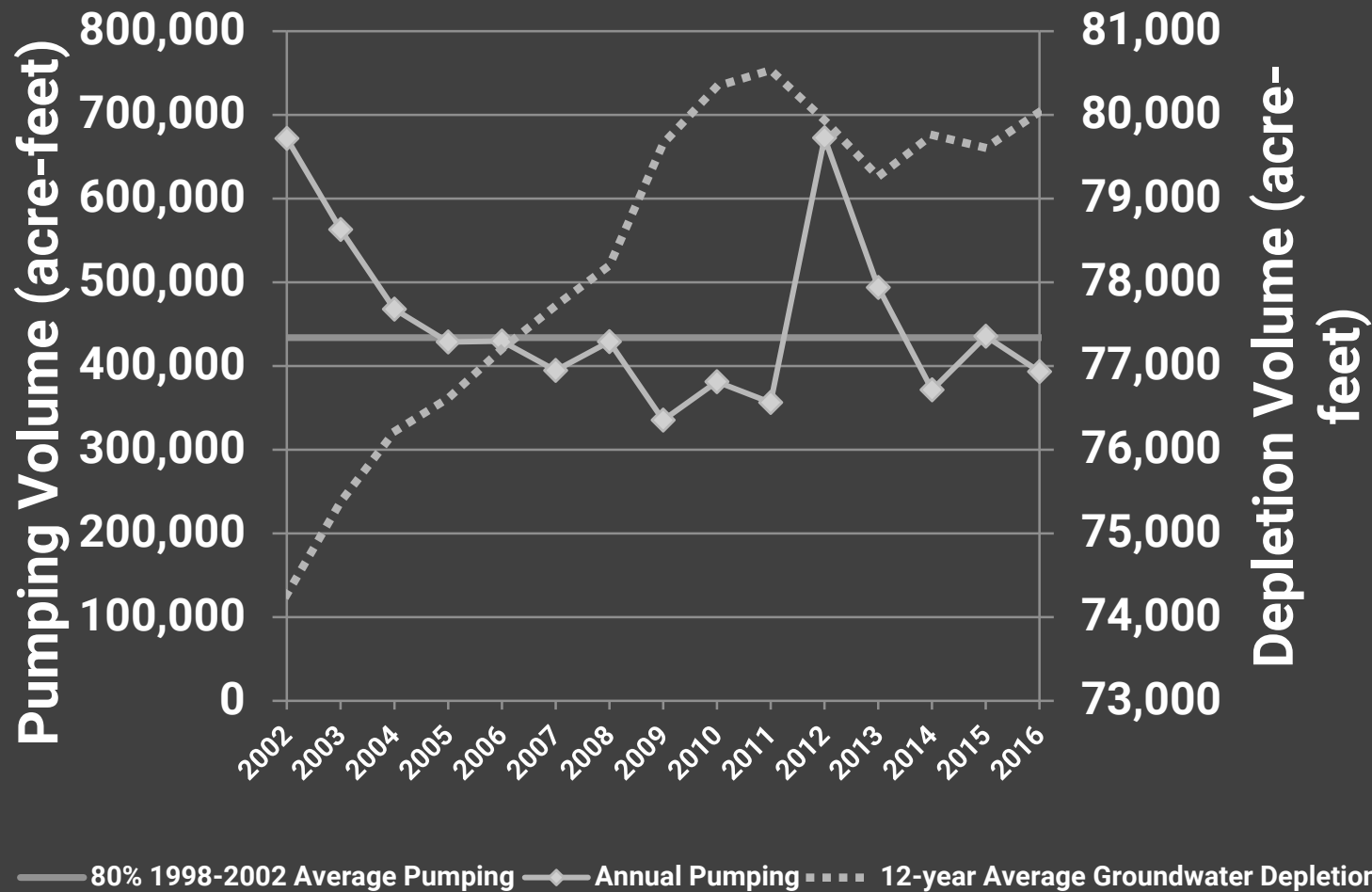
# 10% Reduction in Streamflow Depletions Example C

## 1993-2004 Average Streamflow Depletions

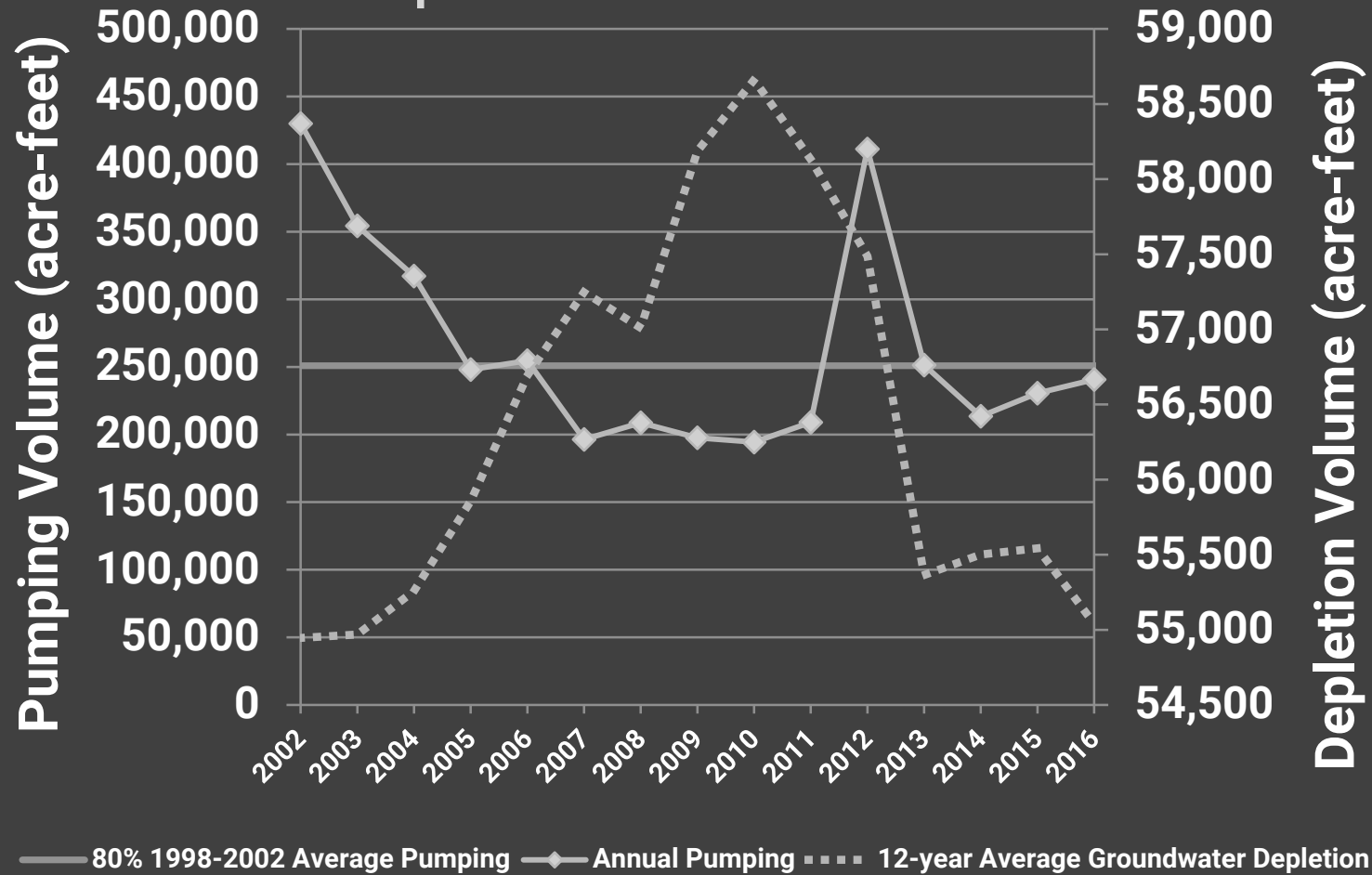


- 1993-2004 Average Depletions (193,190 af)
- - 10% Reduction in 1993-2004 Average Depletions (172,971 af)
- Compact Accounting Groundwater CBCU (Depletions)

# Groundwater Pumping Volumes and Depletions for the URNRD

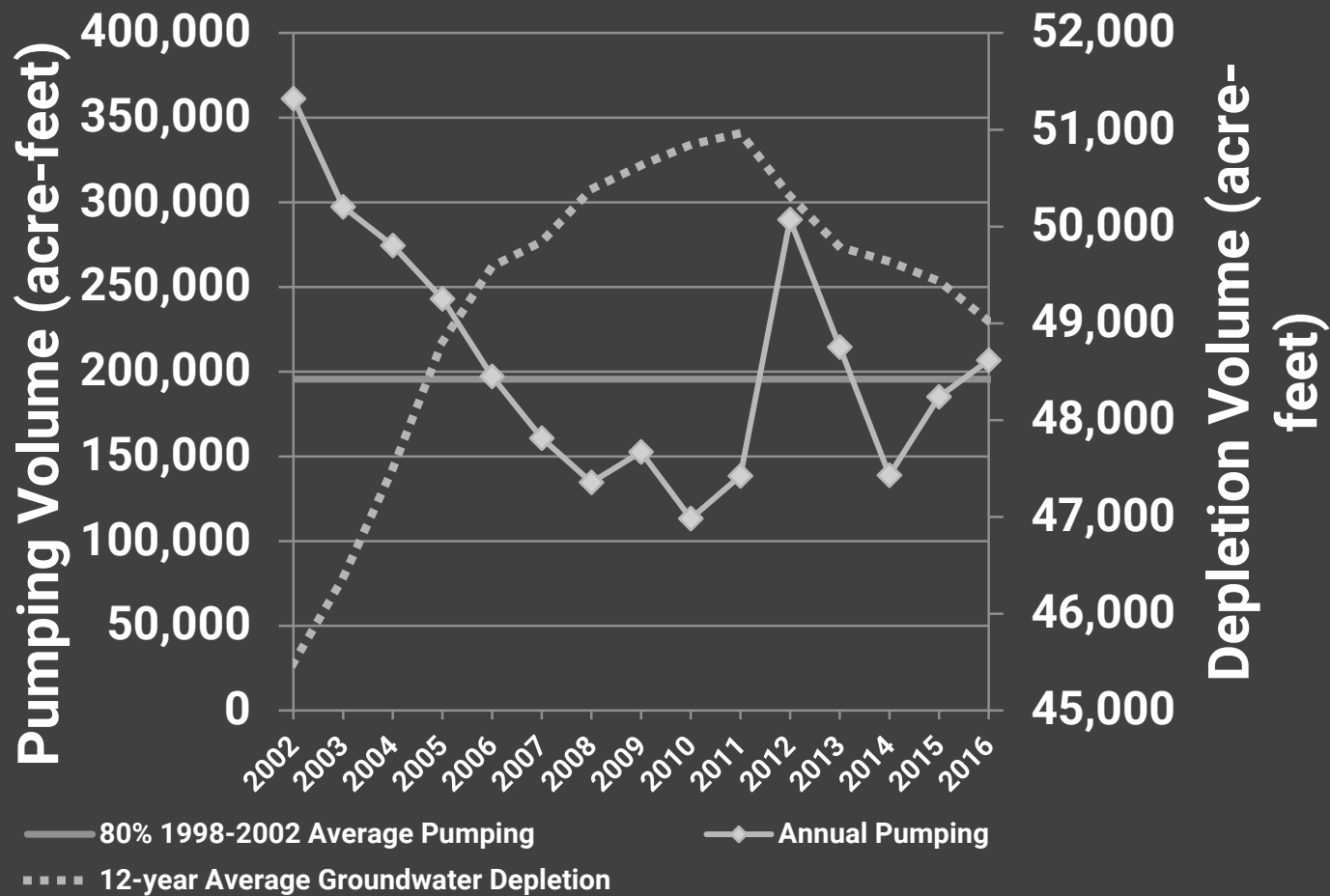


# Groundwater Pumping Volumes and Depletions for the MRNRD

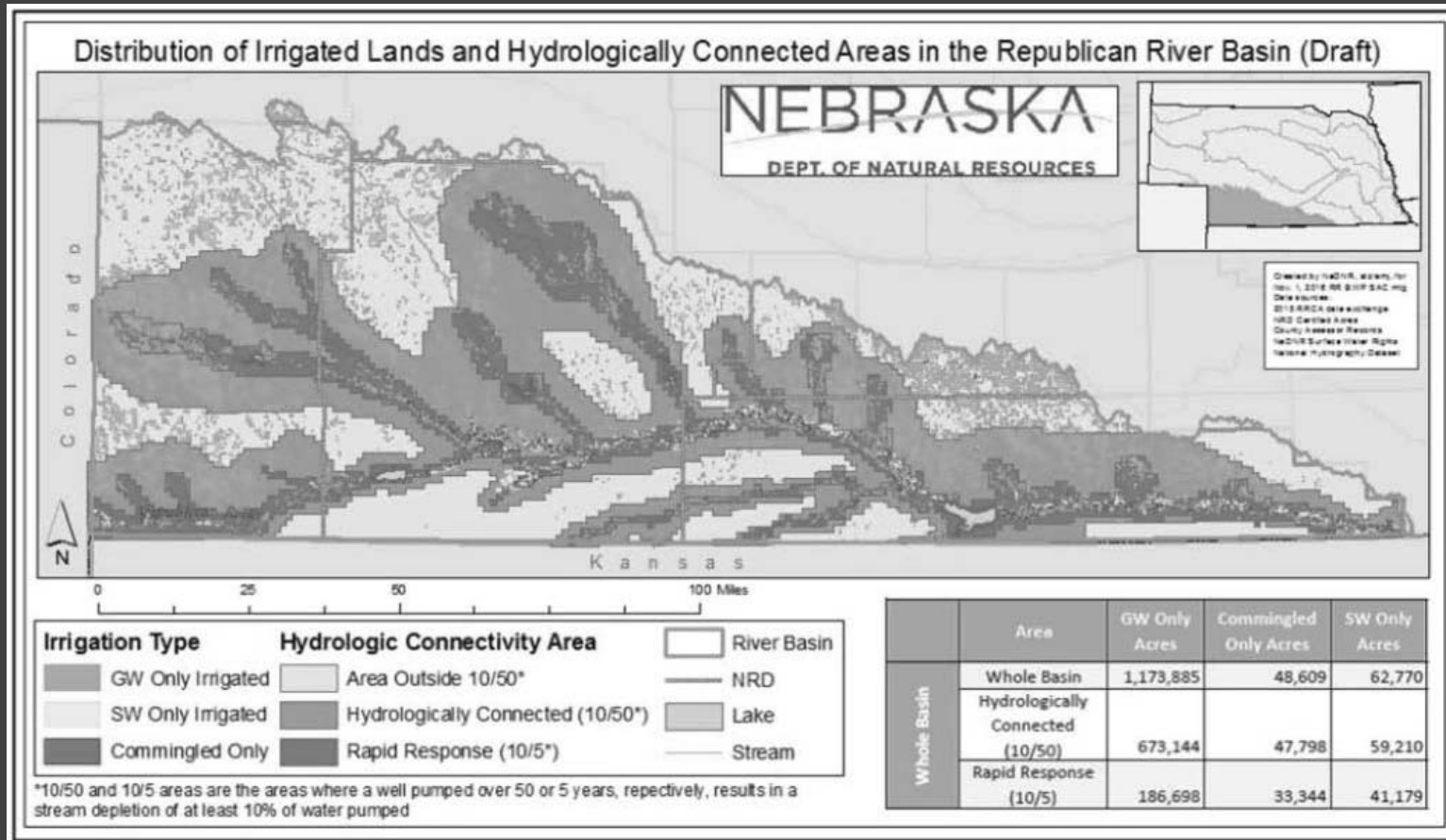




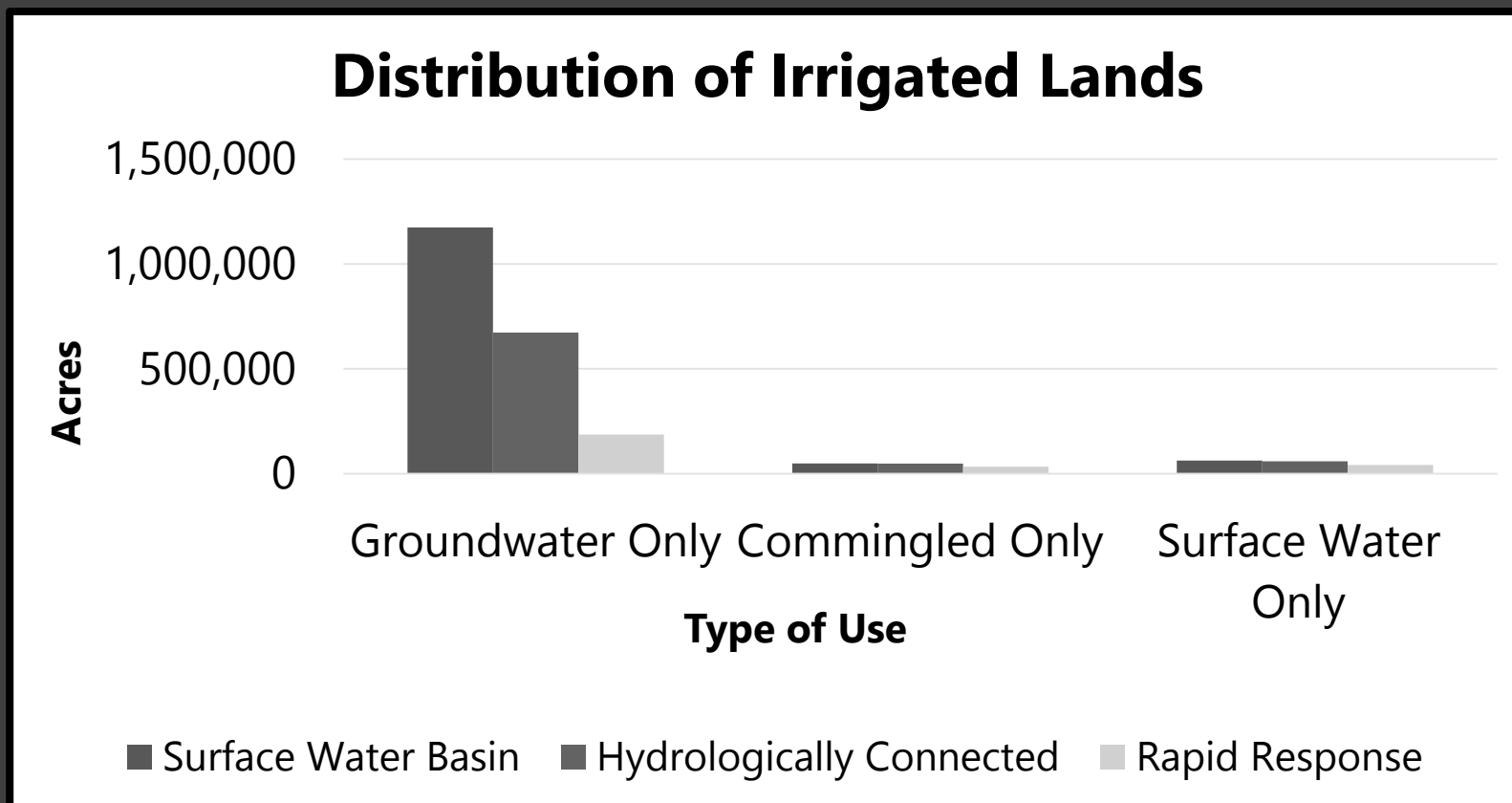
# Groundwater Pumping Volumes and Depletions for the LRNRD



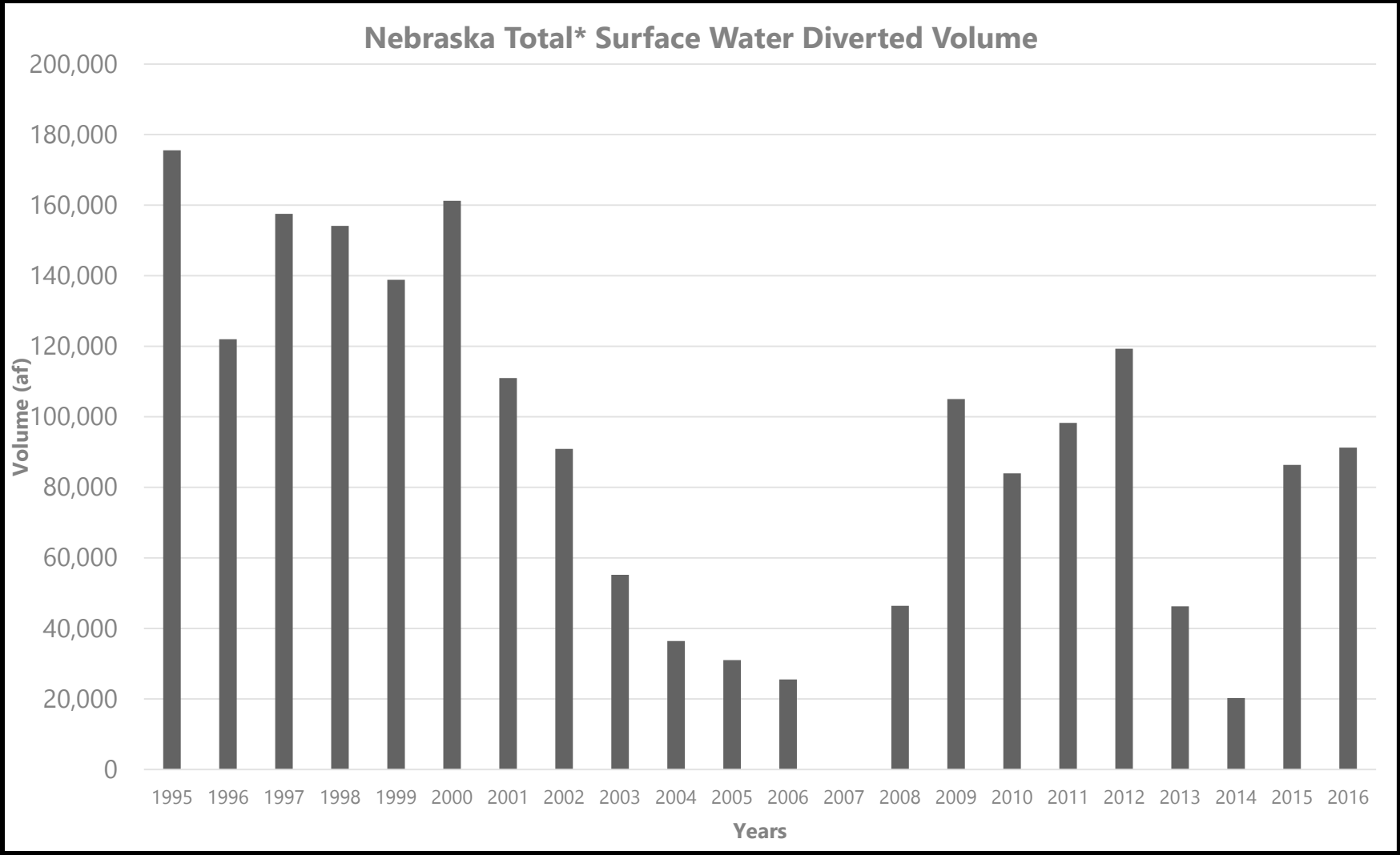
# Map of Potentially Irrigated Land



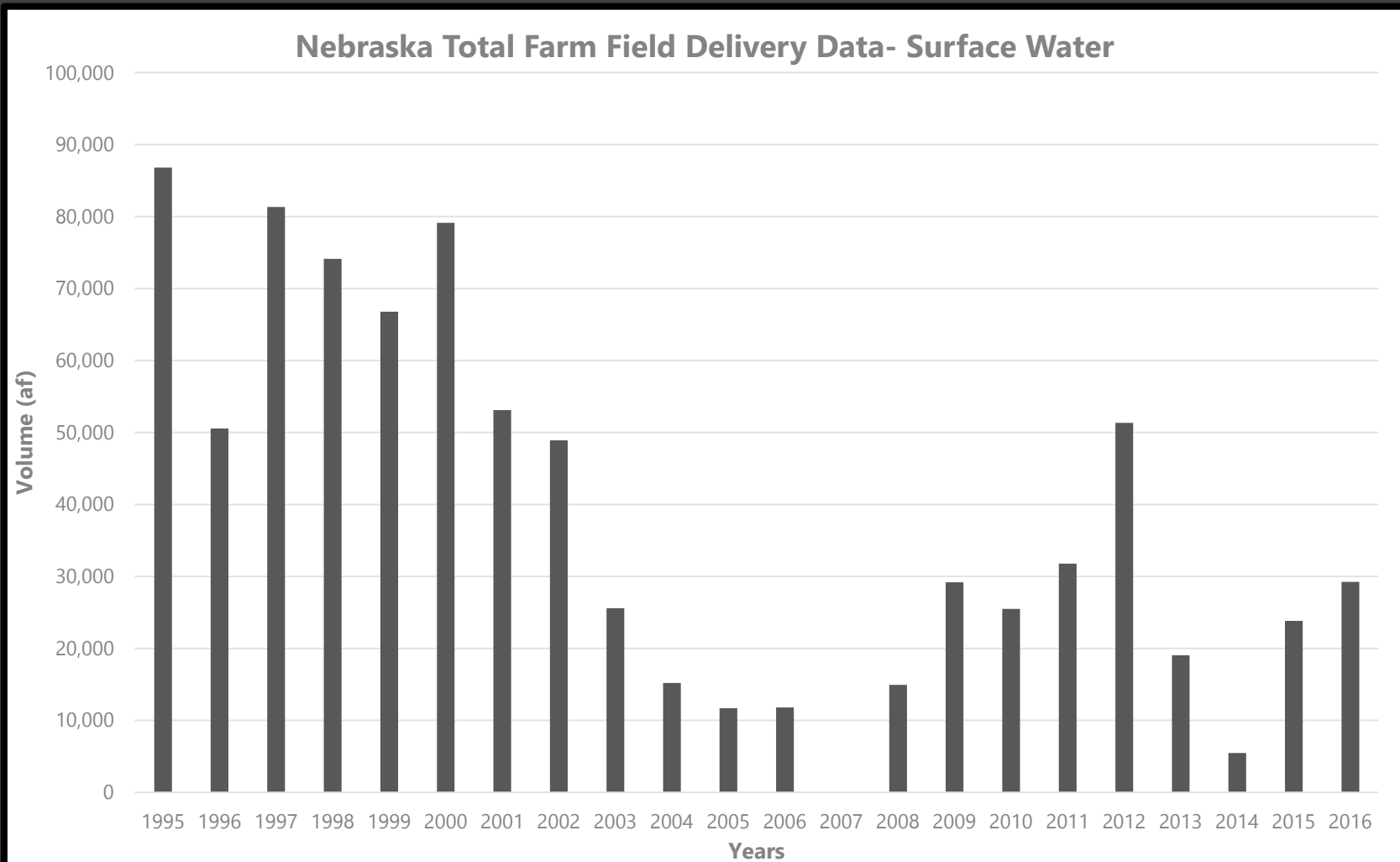
# Water Use by Area



# Surface Water Diversions



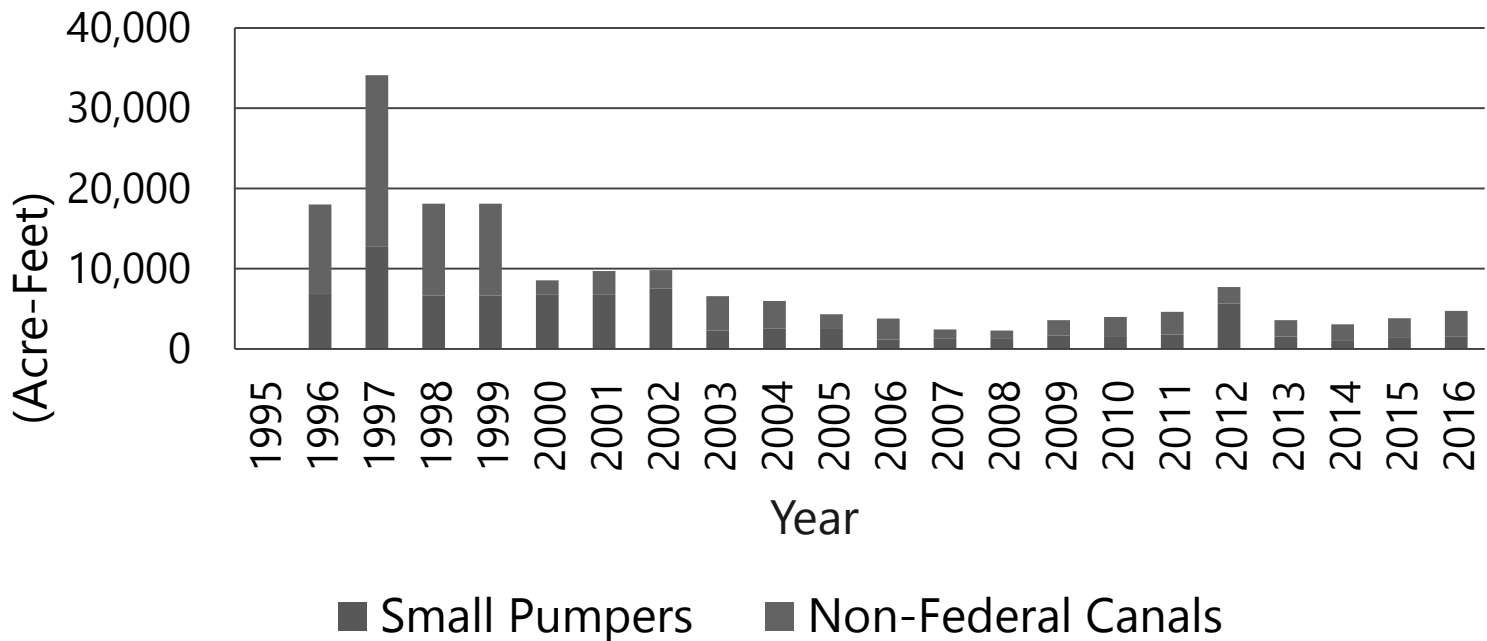
# Surface Water Field Deliveries for Federal Canals



# Small Pumpers

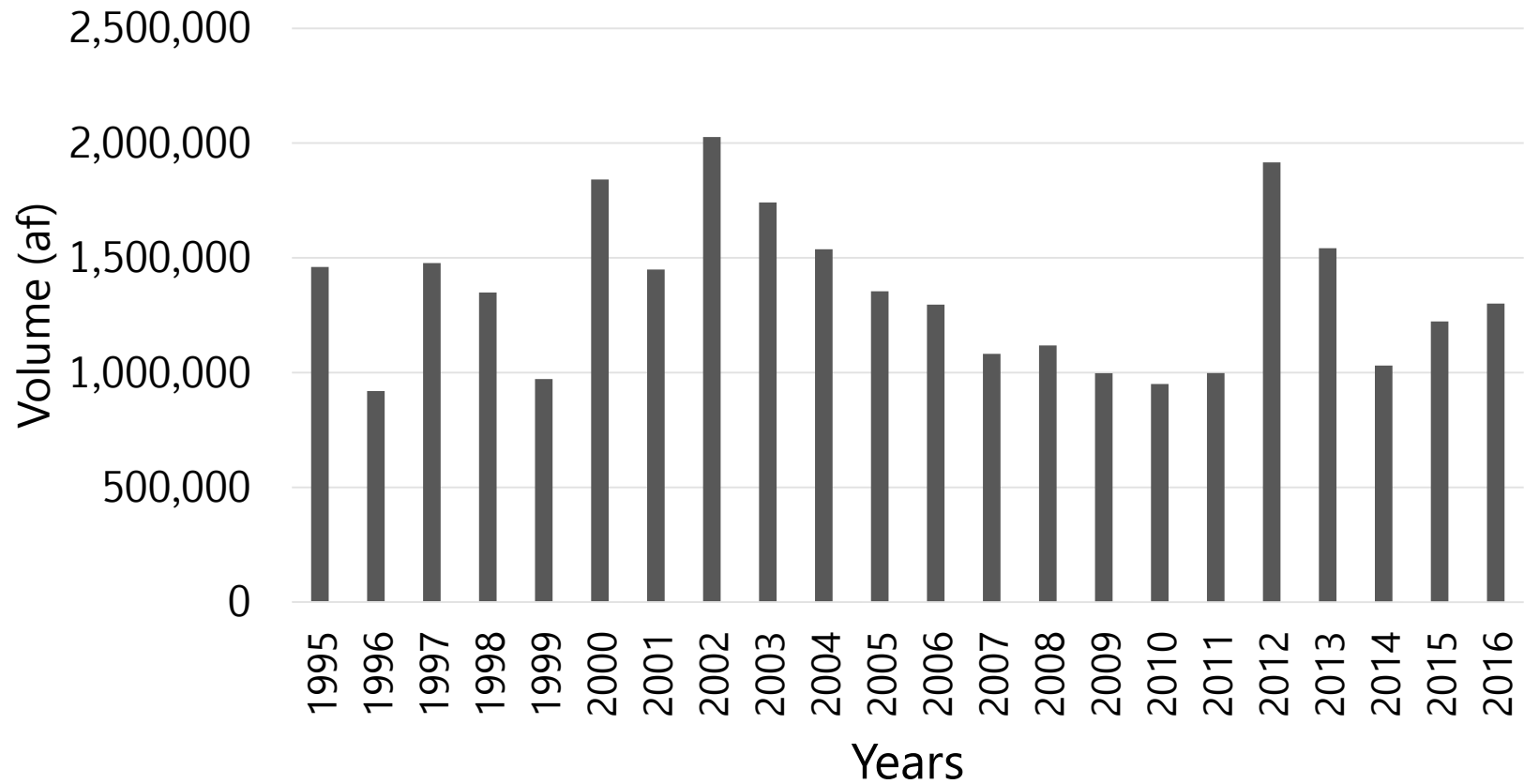
## Nebraska Surface Water Small Pumper and Non-Federal Canal Volume Summary Data

Surface Water Small Pumper  
and Non-Federal Canal Volume  
(Acre-Feet)



# Groundwater Pumping

**Total Groundwater Pumping for Republican NRDs  
Within the RRCA Model Area, 1995-2016**



# NEBRASKA

Good Life. Great Water.

---

**DEPT. OF NATURAL RESOURCES**

301 Centennial Mall South, 4<sup>th</sup> Floor

PO Box 94676

Lincoln, NE 68509-4676

402-471-2363