

# Platte Basin Coalition Committee

## Minutes

December 7th, 2015, 2:30 p.m. Central Time  
TPNRD Office, Great Western Bank Building, North Platte, NE

**Call to order and attendance:** Miller called the meeting to order at 2:30 p.m., Central Time. Sponsors and partners in attendance (Attachment A) were:

Duane Woodward	CPNRD	John Berge	NPNRD
Lyndon Vogt	CPNRD	Rod Horn	SPNRD
Mark Czaplewski	CPNRD	Ryan Reisdorf	SPNRD
Jesse Mintken	CPNRD	John Thorburn	TBNRD
Jennifer Schellpeper	NDNR	Ann Dimmitt	TPNRD
Jessie Wietjes	NDNR	Landon Shaw	TPNRD
Melissa Mosier	NDNR	Kent O. Miller	TPNRD
Kathy Benson	NDNR		

Guests in attendance:

Mike Drain	CNPPID	Jeff Shafer	NPPD
Jerry Carson			

- 1. Welcome and Open Meetings Act:** Miller noted that a copy of the Open Meetings Act was available in the meeting room.
- 2. Publication of Meeting Notices:** The NDNR published a public notice (Attachment B) of the PBC meeting in the Grand Island Independent on November 30, 2015, the North Platte Telegraph on December 5, 2015, and the Scottsbluff Star Herald on November 28, 2015.
- 3. Agenda Modifications:** No revisions were made to the agenda (Attachment C).
- 4. Approval of the October 6<sup>th</sup>, 2015, PBC Meeting Minutes:**

**Motion:** To approve the October 6th, 2015, PBC meeting minutes (Attachment D).  
**Berge motioned to approve and Vogt seconded. Motion passed with all ayes.**
- 5. Budget Update (NDNR)**
  - A. Operations:** Schellpeper reported there were no updates at this time. (Attachment E).

**B. Studies:** Schellpeper stated The Flatwater Group invoice for the Conservation Measures Study, Phase II, in the amount of \$20,471.25 would need a motion. The amount would be split 50/50 with DNR paying 50% (\$10,235.63) and the NRDs splitting the other 50% equally (\$2,047.13 x 5).

**i. Conservation Measures Study**

**a. Invoice:** The final amount of the invoice (Attachment F) needs to be approved and then NDNR will send the invoices to the NRDs.

**Motion:** To approve the Flatwater Invoice on Contract #571 in the amount of \$20,471.25.

**Thorburn motioned to approve and Horn seconded. Motion passed with all ayes.**

***Action:*** Invoices will be sent to the individual NRDs.

**ii. Difference Between Current and Fully Appropriated Study:** No update

**iii. Robust Review:** No update

**C. Second three-year increment funding (years 4-6)**

Schellpeper reported in the years 1-3 on Phase II North Dry Creek there is a remaining balance of \$17,160.36. Thorburn has put together an estimate for the final budget on this project. Thorburn reported that he would be asking NDNR for approximately \$6,700 to finalize the North Dry Creek Project. After the final bills are paid TBNRD would like to transfer the remaining dollar amount in the North Dry Creek project to the Elwood Reservoir and E-65 Excess Flow Project.

**Motion:** To transfer TBNRD unspent monies to Elwood and E-65 Excess Flows.  
**Thorburn motioned to approve and Vogt seconded. Motion passed with all ayes.**

Schellpeper reported that the Grandview Permanent Retirement project has been paid out and is completed. Payment was made in the Fall/Winter 2015 to E65 Canal and Elwood Recharge Project with some dollars remaining.

Requests for Funds for E65 Canal & Elwood Reservoir and Phelps Canal Projects Memo (Attachment G) was presented to the members and Shellpeper gave an explanation of the contracts.

**Motion:** To approve funding for E65 Canal & Elwood Reservoir, Contract #571, in the amount of \$242,980.

**Berge motioned to approve and Vogt seconded. Motion passed with all ayes.**

Ann Dimmit, TPNRD, explained the memo (Attachment H) in regard to a funding request for the TPNRD and SPNRD Excess Flow Recharge Project.

**Motion:** To approve funding for TPNRD and SPNRD Excess Flow Recharge Project, Contract #587. This funding is not to include WRCF matching dollars for TPNRD as TPNRD no longer has matching dollars available from the WRCF.

**Vogt motioned to approve and Thorburn seconded. Motion passed with all ayes.**

Mark Czaplewski, CPNRD, gave an explanation of his memo discussing the existing budget for use on the Orchard-Alfalfa Canal Rehabilitation Project (Attachment I).

**Motion:** To approve the already budgeted funds of \$292,724.48 to cover expenditures of the Orchard-Alfalfa Canal Rehabilitation Project, Contract #615.

**Horn motioned to approve and Thorburn seconded. Motion passed with all ayes.**

**Action:** CPNRD will work with NDNR to amend contract #615.

## **6. Project Updates**

**A. N-CORPE:** Miller reported that the current estimated timeline for construction of the north pipeline is late 2016. The south pipeline is currently operating at half capacity to deliver 32,000 a-f to the Republican River, based on accounting. TPNRD continues to have 25% of their share of water in storage due to the lack of the north pipeline. Shaw, with the help of Jim Schneider, will be working on a model acceptable to the N-CORPE body to maintain sustainability in the aquifer.

**B. J-2 Regulating Reservoir:** Schellpeper reminded the group of the previous discussion on the J-2 budget (Attachment J). Miller added information from the Governance Committee meeting that discussions were had on the much higher cost of the J-2 Project. New options are being looked into.

**C. North Platte NRD Lease and Retirements (NPNRD)**

- i. Cow Camp:** A contract with NDNR for reimbursement on lease payments has been drafted. NPNRD is looking into different ideas for the project as the site is not conducive to a recharge pit.
- ii. Grandview:** This is completed.
- iii. Hardt & Tighe:** Contracts are being drawn to facilitate reimbursement.

**D. Tri-Basin Phase II Augmentation:** Thorburn had nothing new to report.

**E. South Platte NRD Industrial Baseline Offset (SPNRD):** Horn reported that water use continues to be monitored. The second annual payment will be made this month and SPNRD will be requesting reimbursement from the PBC.

**F. Excess Flow Diversion Updates (NDNR, TPNRD, & TBNRD):** Most of the canals used for excess flow diversions will not operate over the winter months due to concerns about damage from icy conditions. One exception would be the diversions into the CNPPID system for E-65 and Elwood Reservoir.

**7. Project Request**

**A. South Platte NRD Oliver Reservoir Streamflow Enhancement Project:** Horn gave an explanation of his memo and project report (Attachment K) to request approval for reimbursement in the amount of \$277,200. After approval there would be a more detailed SOW completed. Schellpeper asked for an estimate on the streamflow increase and also wanted to check into the standard for monies allowed for project studies. It was decided that more information would be provided by SPNRD.

**Motion:** To provisionally approve the Oliver Reservoir Streamflow Enhancement Project in the amount of \$277,200, engineering and analysis at \$162,000; with the condition that SPNRD provide additional information on the benefits of the project to streamflow and NDNR reviews applicable funding procedures.

**Vogt motioned to approve the request and Thorburn seconded. Motion passed with all ayes.**

**Action:** 1) SPNRD will provide the hydrology and hydrogeology study and more information on the estimated benefit to streamflow.  
2) NDNR will review the additional information provided by SPNRD as well as the funding procedures.

**8. Public Comments:** There were no public comments.

**9. Adjourn:** Miller adjourned the meeting at 3:15 p.m.

**Action Item Summary:**

- 1) NDNR will send out invoices to the NRDs.
- 2) CPNRD will work with NDNR to amend contract #615.
- 3) SPNRD will provide the additional information on the Oliver Reservoir Project
- 4) NDNR will review the additional Oliver Reservoir information; and review funding statutes.

The PBC meeting schedule is as follows:

February 3, 2016	2:30 p.m.	TPNRD Office, Great Western Bank Building, North Platte, NE
April 6, 2016	1:30 p.m.	TPNRD Office, Great Western Bank Building, North Platte, NE
June 2, 2016	1:30 p.m.	TPNRD Office, Great Western Bank Building, North Platte, NE
August 2, 2016	1:30 p.m.	TPNRD Office, Great Western Bank Building, North Platte, NE
October 12, 2016	1:30 p.m.	TPNRD Office, Great Western Bank Building, North Platte, NE
December 16, 2016	1:30 p.m.	TPNRD Office, Great Western Bank Building, North Platte, NE

**\*Meeting times may adjust depending on the Agenda\***

# PLATTE BASIN COALITION MEETING

Meeting Date: December 7, 2015

Place/Room: TPNRD Office

Name:	Representing:	E-Mail:
Jennifer Shellen	NDR	jennifer.shellen@nebraska.gov
John Thorburn	Tri-Basin NRD	jthorburn@tribasinrd.org
Kent O. Miller	Twin Platte NRD	komiller@tpnrd.org
Landon Shaw	TWIN PLATTE NRD	lshaw@tpnrd.org
Ann Dimmitt	" "	afisher@tpnrd.org
ROD L. HORN	SPNRD	rthorn@spnrd.org
John Berge	NPNRD	jberge@upnrd.org
Lyndon Vogt	CPNRD	vogt@cpnrd.org
Duane Woodward	CPNRD	woodward@cpnrd.org
Jeff Shater	NPPD	jtshate@nppd.com
Mark Czaplowski	CPNRD	marke@cpnrd.org
Ryan Reisdorf	SPNRD	rreisdorf@spnrd.org
Jesse Minton	CAUD	<del>es</del> minton@cpnrd.org
Mike Drain	CNPPID	mdrain@cnppid.com
MELISSA MASIER	NDR	melissa.masier@nebraska.gov
Kathy Benson	NDR	Kathy.Benson@nebraska.gov
Jessie Wietjes	NDR	jessie.wietjes@nebraska.gov
Jerry Carson	Gody Dillon	

**PUBLIC NOTICE  
MEETING  
OF THE PLATTE BASIN COALITION**

The Central Platte Natural Resources District, North Platte Natural Resources District, South Platte Natural Resources District, Tri-Basin Natural Resources District, Twin Platte Natural Resources District (collectively, the Platte Basin NRDs), and the Nebraska Department of Natural Resources (Department) hereby provide notice that a public meeting of the Platte Basin Coalition will be held on Monday, December 7<sup>th</sup>, 2015, at 2:30 p.m. Central Time, at the Twin Platte Natural Resources District office, 111 South Dewey Street, North Platte, Nebraska.

The Platte Basin Coalition purpose is to create a cooperative body to assist the Platte Basin NRDs and the Department with resource management and efficient implementation of the basin-wide management plan and the individual integrated management plans for the overappropriated area of the Platte River Basin.

An agenda of the meeting is available for public inspection during normal business hours at the offices of the Platte Basin NRDs and the Department and at the following website: [www.dnr.nebraska.gov](http://www.dnr.nebraska.gov). Please refer to the websites and phone numbers listed below for further information.

CPNRD: <http://www.cpnrd.org> or phone (308) 385-6282  
215 Kaufman Avenue, Grand Island, NE 68803

NPNRD: <http://www.npnrd.org> or phone (308) 632-2749  
100547 Airport Road, Scottsbluff, NE 69363

SPNRD: <http://www.spnrd.org> or phone (308) 254-2377  
551 Parkland Drive, Sidney, NE 69162

TBNRD: <http://www.tribasinprd.org> or phone (308) 995-6688  
1723 Burlington Street, Holdrege, NE 68949

TPNRD: <http://www.tpnrd.org> or phone (308) 535-8080  
111 S Dewey Street, North Platte, NE 69101

Department: <http://www.dnr.nebraska.gov> or phone (402) 471-2363  
301 Centennial Mall South, 4<sup>th</sup> Floor, Lincoln, NE 68508

Individuals with disabilities may request auxiliary aids and services necessary for participation by contacting Melissa Mosier at the Nebraska Department of Natural Resources, 301 Centennial Mall South, PO Box 94676, Lincoln, NE 68509-4676, telephone (402) 471-3948 or e-mail [melissa.mosier@nebraska.gov](mailto:melissa.mosier@nebraska.gov).

# Agenda

## Platte Basin Coalition Committee Meeting

December 7<sup>th</sup>, 2015, 2:30 p.m. Central Time  
TPNRD Office, Great Western Bank Building, North Platte, NE

1. Welcome and Open Meetings Act
2. Publication of Meeting Notices
3. Agenda Modifications
4. Approval of October 6, 2015, PBC Meeting Minutes
5. Budget Update (NDNR)
  - A. Operations
  - B. Studies
    - i. Conservation Measures Study
    - ii. Difference Between Current and Fully Appropriated Study
    - iii. Robust Review
  - C. Second three-year increment funding
    - i. Orchard-Alfalfa Canal Rehabilitation Project (CPNRD)
6. Project Updates
  - A. N-CORPE (TPNRD)
  - B. J-2 Regulating Reservoir (NDNR)
  - C. North Platte NRD Leases and Retirements (NPNRD)
    - i. Cow Camp
    - ii. Grandview
    - iii. Hardt & Tighe
  - D. Tri-Basin NRD Phase II Augmentation - North Dry Creek (TBNRD)
  - E. South Platte NRD Industrial Baseline Offset (SPNRD)
  - F. Excess Flow Diversion Updates (NDNR, TPNRD & TBNRD)
7. Project Request
  - A. South Platte NRD Oliver Reservoir Streamflow Enhancement Project
8. Schedule of 2016 PBC Meetings
9. Public Comments
10. Adjourn

The next PBC meeting is scheduled for **February 3, 2016**, and will be held at **2:00** p.m. Central Time at the Twin Platte NRD office.



# Platte Basin Coalition Committee

## DRAFT Minutes

October 6th, 2015, 2:30 p.m. Central Time  
TPNRD Office, Great Western Bank Building, North Platte, NE

**Call to order and attendance:** Vogt called the meeting to order at 2:30 p.m., Central Time.  
Sponsors and partners in attendance (Attachment A) were:

Lyndon Vogt	CPNRD	John Berge	NPNRD
Jesse Mintken	CPNRD	Rod Horn	SPNRD
Kayla Sharp	NDNR	John Thorburn	TBNRD
Jennifer Schellpeper	NDNR	Ann Dimmitt	TPNRD
Melissa Mosier	NDNR		

Guests:

Kevin Boyd, CNPPID

Michael Krondak, NPPD

- 1. Welcome and Open Meetings Act:** Vogt noted that a copy of the Open Meetings Act was available in the meeting room.
- 2. Publication of Meeting Notices:** The NDNR published a public notice (Attachment B) of the PBC meeting in the Grand Island Independent on September 26, 2015, the North Platte Telegraph on September 29, 2015, and the Scottsbluff Star Herald on September 26, 2015.
- 3. Agenda Modifications:** Vogt suggested to add discussion about the RFQ for the basin-wide facilitator under the budget item of the agenda (Attachment C).
- 4. Approval of August 6th, 2015, PBC Meeting Minutes:**

**Motion:** To approve the August 6th, 2015, PBC meeting minutes (Attachment D).  
**Horn motioned to approve and Thorburn seconded. Motion passed with all ayes.**
- 5. Budget Update (NDNR)**
  - A. Operations:** Vogt stated it was requested to hire a facilitator for second increment basin-wide planning and an RFQ needed to be discussed. Schellpeper stated the PBC was sent a draft proposal of an RFQ with some comments were received. The comments will be incorporated. The consensus of the PBC group is that they

would like NDNR to move forward with the RFQ on behalf of the PBC for the second increment basin-wide planning process. The funding will be discussed at a later date.

Sharp led discussion of the PBC budget summary spreadsheets (Attachment E). Sharp reported that the operations budget has had no changes since the previous meeting.

**Action:** NDNR is to finalize and advertise an RFQ for the purposes of hiring a facilitator.

## **B. Studies**

### **i. Conservation Measures Study**

**a. Invoice:** The Flatwater invoice was received and is attached (Attachment F). Sharp will break out the costs to each individual PBC member.

**Action:** Sharp will send invoices to the NRDs for the Conservation Study work performed by Flatwater and its subcontractors.

**ii. Difference Between Current and Fully Appropriated Study:** No update

**iii. Robust Review:** No update

**C. Second three-year increment funding (years 4-6):** Sharp referred the group to the handout of the Legislature report showing what was spent in the last fiscal year (2015) and what is anticipated to be spent in the next fiscal year (2016). This annual report is a requirement of the Water Resources Cash Fund.

In regards to Elwood and E65, the last invoice was received with \$312 remaining in the budget.

## **6. Project Updates**

**A. N-CORPE:** Dimmit reported no update as they are still waiting on legislation. Work continues with landowners on easements and pipeline installation will hopefully begin next fall.

**B. J-2 Regulating Reservoir:** Schellpeper reported the quarterly report from CNPPID was included. There are some significant cost issues and project alternatives are being explored. The cost cap to explore alternative designs is set at \$250,000, and the deadline to complete the study of alternatives is March 2016.

It is hoped to develop a graph of cost vs. storage to have ready for the March governance committee meeting. The J-2 reservoir project is still a viable project being pursued by PRRIP. J-2 still counts as a water project under the Nebraska New Depletion Plan, as well as the basin-wide IMP. At this time, the project continues to have a PRRIP score of 40,000 AF.

**C. North Platte NRD Lease**

- i. **Cow Camp** - Berge reported the operations plan is still being worked on in regard to winter-time return flows. Discussions continue over the infiltration pit vs. direct return options. There is a pending application with NDNR on the infiltration pit.
- ii. **Grandview** - The easement contract was recently signed with NDNR.
- iii. **Hardt & Tighe** - This is a groundwater retirement project for which PBC funds are being sought for reimbursement.

**D. Tri-Basin Phase II Augmentation:** Thorburn reported both augmentation wells are operational. Schellpeper asked if there were more invoices as there was \$17,000 left in the budget and the money needs to be reallocated. Thorburn stated there was one invoice which amounted to approximately \$1,500.

*Action:* TPBRD will send out the last invoice for the augmentation project.

**E. South Platte NRD Temporary Retirement Agreement:** Horn reported that water use at the project site continues to be monitored.

**F. Excess Flow Diversion Updates (NDNR):**

- i. Schellpeper reported the contract, which was set at 17,000 AF, has expired. There are remaining reserved project dollars to be reallocated.

**7. Schedule of 2016 PBC meetings**

**A.** Wednesday, February 3, 2016. The meeting will begin at 2:00 p.m. instead of 2:30 p.m.

**8. Public Comments:** No public comments.

**9. Adjourn:** The meeting adjourned at 2:55 p.m.

**Action Item Summary:**

- 1) NDNR will update the RFQ language with the NRD comments and will advertise the RFQ to hire a facilitator on behalf of the PBC.
- 2) Sharp will send invoices to the NRDs for the Conservation Study work performed by Flatwater and its subcontractors.
- 3) TPBRD will send out the last invoice for the augmentation project.
- 4) Schedule 2016 meetings.

Next meetings of the PBC are scheduled for the following dates, times, and locations:

<b>Date</b>	<b>Time</b>	<b>Location</b>
December 7, 2015	2:30 p.m.	TPNRD Office, Great Western Bank Building, North Platte, NE
February 3, 2016	<b>2:00 p.m.</b>	TPNRD Office, Great Western Bank Building, North Platte, NE

**PBC Operations Budget**

**PBC Funding Summary Updated 3/23/2015**

<b>PBHEP Budget Summary</b>	<b>CPNRD</b>	<b>NPNRD</b>	<b>SPNRD</b>	<b>TBNRD</b>	<b>TPNRD</b>	<b>NDNR</b>	<b>Total by Year</b>
Budget Year 1	\$ 503.33	\$ 503.33	\$ 503.33	\$ 503.33	\$ 503.34	\$ 503.34	\$ 3,020.00
Budget Year 2	\$ 535.85	\$ 535.85	\$ 535.85	\$ 535.85	\$ 535.85	\$ 535.85	\$ 3,215.10
Budget Year 3	\$ 561.15	\$ 561.15	\$ 561.15	\$ 561.15	\$ 561.15	\$ 561.15	\$ 3,366.90
<b>Total 3 Year Budget</b>	<b>\$ 1,600.33</b>	<b>\$ 1,600.33</b>	<b>\$ 1,600.33</b>	<b>\$ 1,600.33</b>	<b>\$ 1,600.34</b>	<b>\$ 1,600.34</b>	<b>\$ 9,602.00</b>

*Paid 5/23/13*

*Paid 3/7/14*

*paid 3/17/15*

<b>PBC Budget Summary**</b>	<b>CPNRD</b>	<b>NPNRD</b>	<b>SPNRD</b>	<b>TBNRD</b>	<b>TPNRD</b>	<b>NDNR</b>	<b>Total by Year</b>
Budget Year 4	\$ 597.40	\$ 597.40	\$ 597.40	\$ 597.40	\$ 597.40	\$ 597.40	\$ 3,584.41
Budget Year 5	\$ 636.00	\$ 636.00	\$ 636.00	\$ 636.00	\$ 636.00	\$ 636.00	\$ 3,815.97
Budget Year 6	\$ 677.08	\$ 677.08	\$ 677.08	\$ 677.08	\$ 677.08	\$ 677.08	\$ 4,062.50
<b>Total 3 Year Budget</b>	<b>\$1,910.48</b>	<b>\$1,910.48</b>	<b>\$1,910.48</b>	<b>\$1,910.48</b>	<b>\$1,910.48</b>	<b>\$1,910.48</b>	<b>\$11,462.88</b>

**PBC Study Budget**

Updated 12/4/2015

PBHEP Budget Summary	CPNRD	NPNRD	SPNRD	TBNRD	TPNRD	NDNR	Total by Year
Invoice 13-1511 (Phase I ConPracStudy)	\$ -	\$ -	\$ -	\$ -	\$ -	\$ 24,556.00	
Invoice 13-1537 (Phase I ConPracStudy)	\$ -	\$ -	\$ -	\$ -	\$ -	\$ 42,096.00	
Invoice 13-1560 (Phase I ConPracStudy)	\$ -	\$ -	\$ -	\$ -	\$ -	\$ 3,508.00	
Contract # 571	\$ -	\$ -	\$ -	\$ -	\$ -	\$ -	
<b>Total 3 Year Budget</b>	<b>\$ -</b>	<b>\$ -</b>	<b>\$ -</b>	<b>\$ -</b>	<b>\$ -</b>	<b>\$ 70,160.00</b>	<b>\$ 70,160.00</b>

Remaining \$ -

Total Budget	CPNRD	NPNRD	SPNRD	TBNRD	TPNRD	NRD Total	NDNR	Total
\$ 22,600.00	\$ 22,600.00	\$ 22,600.00	\$ 22,600.00	\$ 22,600.00	\$ 22,600.00	\$ 113,000.00	\$ 113,000.00	\$ 226,000.00
<b>Conservation Study Phase II Contracted (#571)</b>	<b>CPNRD</b>	<b>NPNRD</b>	<b>SPNRD</b>	<b>TBNRD</b>	<b>TPNRD</b>	<b>NRD Total</b>	<b>NDNR</b>	<b>Total</b>
Invoice 15-1764 (Phase II)	\$ 1,783.45	\$ 1,783.45	\$ 1,783.45	\$ 1,783.45	\$ 1,783.45	\$ 8,917.25	\$ 8,917.25	\$ 17,834.50
Invoice 15-1798 (Phase II)	\$ 678.00	\$ 678.00	\$ 678.00	\$ 678.00	\$ 678.00	\$ 3,390.00	\$ 3,390.00	\$ 6,780.00
Invoice 15-1829 (Phase II)	\$ 2,047.12	\$ 2,047.12	\$ 2,047.12	\$ 2,047.12	\$ 2,047.12	\$ 10,235.60	\$ 10,235.65	\$ 20,471.25
Total	\$ 4,508.57	\$ 4,508.57	\$ 4,508.57	\$ 4,508.57	\$ 4,508.57	\$ 22,542.85	\$ 22,542.90	\$ 45,085.75
Remaining totals by Contributor	\$ 18,091.43	\$ 18,091.43	\$ 18,091.43	\$ 18,091.43	\$ 18,091.43	\$ 90,457.15	\$ 90,457.10	\$ 180,914.25

Post-1997 Study	CPNRD	NPNRD	SPNRD	TBNRD	TPNRD	NRD Total	NDNR	Total
Invoice 14-1637	\$ -	\$ -	\$ -	\$ -	\$ -	\$ -	\$ 24,678.75	
Invoice 15-1724	\$ -	\$ -	\$ -	\$ -	\$ -	\$ -	\$ 6,435.00	
Contracted with Flatwater (#772)	\$ -	\$ -	\$ -	\$ -	\$ -	\$ -	\$ -	
Total	\$ -	\$ -	\$ -	\$ -	\$ -	\$ -	\$ 31,113.75	\$ 45,000.00
Remaining totals by Contributor								\$ 13,886.25

Consultant Estimates October 2014 \$ 115,000.00 \$ 107,000.00 \$ 222,000.00

OA/FA Study	CPNRD	NPNRD	SPNRD	TBNRD	TPNRD	NRD Total	IWMPPF	Total
Contracted (#571)	\$ 9,000.00	\$ 9,000.00	\$ 9,000.00	\$ 9,000.00	\$ 9,000.00	\$ 45,000.00	\$ 180,000.00	\$ 225,000.00

Robust Review Work	CPNRD	NPNRD	SPNRD	TBNRD	TPNRD	NRD Total	NDNR	Total
Budget Pre-Estimate	\$ -	\$ -	\$ -	\$ -	\$ -	\$ 200,000.00	\$ 200,000.00	\$ 400,000.00

Total Study Budget	CPNRD	NPNRD	SPNRD	TBNRD	TPNRD	NRD Total	NDNR	IWMPPF	Total
\$ 13,508.57	\$ 13,508.57	\$ 13,508.57	\$ 13,508.57	\$ 13,508.57	\$ 13,508.57	\$ 267,542.85	\$ 433,656.65	\$ 180,000.00	\$ 715,085.75

PBC Budget Years 1 to 3 Review and Amendments  
 Updated 11/17/2015

Table 1

PBC Budget Summary	CPNRD	NPNRD	SPNRD	TBNRD	TPNRD	Total NRD	DNR (NET Transfer)	DNR General Fund	Total by Year
Budget Year 1	\$ 301,400.00	\$ 708,400.00	\$ 61,600.00	\$ 444,400.00	\$ 684,200.00	\$ 2,200,000.00	\$ 3,300,000.00	\$ 2,200,000.00	\$ 7,700,000.00
Budget Year 2	\$ 301,400.00	\$ 708,400.00	\$ 61,600.00	\$ 444,400.00	\$ 684,200.00	\$ 2,200,000.00	\$ 3,300,000.00	\$ 2,200,000.00	\$ 7,700,000.00
Budget Year 3	\$ 301,400.00	\$ 708,400.00	\$ 61,600.00	\$ 444,400.00	\$ 684,200.00	\$ 2,200,000.00	\$ 3,300,000.00	\$ 2,200,000.00	\$ 7,700,000.00
<b>Total 3 Year Budget</b>	<b>\$ 904,200.00</b>	<b>\$ 2,125,200.00</b>	<b>\$ 184,800.00</b>	<b>\$ 1,333,200.00</b>	<b>\$ 2,052,600.00</b>	<b>\$ 6,600,000.00</b>	<b>\$ 9,900,000.00</b>	<b>\$ 6,600,000.00</b>	<b>\$ 23,100,000.00</b>
Amendment 1 Total (Dec-13) [NPNRD lease & Easement]	\$ -	\$ 121,788.00	\$ -	\$ -	\$ -	\$ 121,788.00	\$ -	\$ 9,432.00	\$ 131,220.00
Amendment 2 Total (Dec-13) [fall 2013 gw recharge]	\$ 6,000.00	\$ -	\$ 2,970.00	\$ 112,199.34	\$ 10,930.00	\$ 132,099.34	\$ -	\$ 198,149.00	\$ 330,248.34
Amendment 3 Total (Aug-14) [spring 2014 gw recharge]	\$ -	\$ -	\$ 600.00	\$ 258,121.50	\$ 3,600.00	\$ 262,321.50	\$ -	\$ 264,421.50	\$ 526,743.00
Amendment 4 Total (Feb-15) [spring-winter 2014-2015, phelps gw recharge]	\$ -	\$ -	\$ -	\$ 239,435.90	\$ -	\$ 239,435.90	\$ -	\$ 295,595.90	\$ 535,031.80
<b>Total Amendment Budget</b>	<b>\$ 6,000.00</b>	<b>\$ 121,788.00</b>	<b>\$ 3,570.00</b>	<b>\$ 609,756.74</b>	<b>\$ 14,530.00</b>	<b>\$ 755,644.74</b>	<b>\$ -</b>	<b>\$ 767,598.40</b>	<b>\$ 1,523,243.14</b>
<b>Total 3 Year Budget &amp; Amendments</b>	<b>\$ 910,200.00</b>	<b>\$ 2,246,988.00</b>	<b>\$ 188,370.00</b>	<b>\$ 1,942,956.74</b>	<b>\$ 2,067,130.00</b>	<b>\$ 7,355,644.74</b>	<b>\$ 9,900,000.00</b>	<b>\$ 7,367,598.40</b>	<b>\$ 24,623,243.14</b>

Feb 2015 Meeting

Feb 2015 Meeting

PBC Budget Summary	CPNRD	NPNRD	SPNRD	TBNRD	TPNRD	Total NRD	DNR (NET Transfer)	DNR General Fund	Total by Year
Revised Budget Years 1 - 3*	\$ 3,782,442.00	\$ 203,046.00	\$ 7,866.00	\$ 1,802,256.74	\$ 1,564,330.00	\$ 7,359,940.74	\$ 9,900,000.00	\$ 7,374,042.40	\$ 24,633,983.14

PBC Project	Cnt #	CPNRD	NPNRD	SPNRD	TBNRD	TPNRD	Total NRD	DNR (NET Transfer)	DNR General Fund	Total by Project	NDNR Amount Paid	Project Status - Notes	NDNR Remaining
North Platte NRD Lease/Recharge - Cow Camp	see status	\$ -	\$ 196,758.00	\$ -	\$ -	\$ -	\$ 196,758.00	\$ 121,887.00	\$ 173,250.00	\$ 491,895.00	\$ -	Draft Contract received	\$ 295,137.00
Phase II North Dry Creek	488	\$ -	\$ -	\$ 24,000.00	\$ -	\$ -	\$ 24,000.00	\$ 36,000.00	\$ -	\$ 60,000.00	\$ 18,839.64	Partial Payment - January 21, 2015	\$ 17,160.36
J-2 Reregulating Reservoir	574	\$ 1,168,500.00	\$ -	\$ -	\$ 1,168,500.00	\$ 934,800.00	\$ 3,271,800.00	\$ 4,907,700.00	\$ 6,426,750.00	\$ 14,606,250.00	\$ 9,672,791.83	Partial Payment, under contract (12/30/2014)	\$ 1,661,658.17
N-CORPE	778	\$ -	\$ -	\$ -	\$ -	\$ 615,000.00	\$ 615,000.00	\$ 922,500.00	\$ -	\$ 1,537,500.00	\$ 900,000.00	Partial Paid - September 4, 2014	\$ 22,500.00
Industrial Baseline Offset SPNRD	N/A	\$ -	\$ -	\$ 4,296.00	\$ -	\$ -	\$ 4,296.00	\$ -	\$ 6,444.00	\$ 10,740.00	\$ 2,148.00	Parital Payment - June 16, 2015	\$ 4,296.00
Grandview Permanent Retirement	see status	\$ -	\$ 6,288.00	\$ -	\$ -	\$ -	\$ 6,288.00	\$ -	\$ 9,432.00	\$ 15,720.00	\$ 9,432.00	Paid - October 28, 2015	\$ -
Orchard-Alfalfa Canal Rehabilitation	615	\$ 1,665,578.40	\$ -	\$ -	\$ -	\$ -	\$ 1,665,578.40	\$ 2,498,367.60	\$ -	\$ 4,163,946.00	\$ 2,498,367.60	Paid - June 10, 2015	\$ -
Re-Use Pits Recharge Project Spring 2014	N/A	\$ -	\$ -	\$ 600.00	\$ -	\$ 3,600.00	\$ 4,200.00	\$ -	\$ 6,300.00	\$ 10,500.00	\$ 6,300.00	Paid - April 17, 2015	\$ -
Thirty-Mile & Orchard Transfer from CPNRD easement package	616 & 615	\$ 118,682.40	\$ -	\$ -	\$ -	\$ -	\$ 118,682.40	\$ 178,023.60	\$ -	\$ 296,706.00	\$ 178,023.60	Paid - January 21, 2015	\$ -
CPNRD conservation easement package*	618	\$ 623,681.20	\$ -	\$ -	\$ -	\$ -	\$ 623,681.20	\$ 935,521.80	\$ -	\$ 1,559,203.00	\$ 935,521.80	Paid - October 8, 2014	\$ -
2014 E65 Canal and Elwood Reservoir Recharge Project (spring 2014)	771	\$ -	\$ -	\$ -	\$ 258,121.50	\$ -	\$ 258,121.50	\$ -	\$ 258,121.50	\$ 516,243.00	\$ 258,121.50	Paid - August 6, 2014	\$ -
Fall 2013 GW recharge	585-588/622-624	\$ 6,000.00	\$ -	\$ 2,970.00	\$ 112,199.34	\$ 10,930.00	\$ 132,099.34	\$ -	\$ 198,149.00	\$ 330,248.34	\$ 198,149.00	Paid - December 12, 2013	\$ -
Cozad & Thirty-Mile (PBHEP Overruns)	592 & 616	\$ 200,000.00	\$ -	\$ -	\$ -	\$ -	\$ 200,000.00	\$ 300,000.00	\$ -	\$ 500,000.00	\$ 300,000.00	Paid - September 24, 2014	\$ -
Spring 2014 E65 Canal and Elwood Reservoir Recharge Project	771	\$ -	\$ -	\$ -	\$ 34,378.65	\$ -	\$ 34,378.65	\$ -	\$ 34,378.65	\$ 68,757.30	\$ 34,378.50	Paid - February 26, 2015	\$ 0.15
Fall/Winter 2014-2015 E65 Canal and Elwood Reservoir Recharge Project	800	\$ -	\$ -	\$ -	\$ 205,057.25	\$ -	\$ 205,057.25	\$ -	\$ 205,057.25	\$ 410,114.50	\$ 205,057.25	Paid - March 31, 2015	\$ -
Phelps Canal Diversion Project (DNR/PRRIP)	799	\$ -	\$ -	\$ -	\$ -	\$ -	\$ -	\$ -	\$ 56,160.00	\$ 56,160.00	\$ 56,160.00	Paid - March 31, 2015	\$ -
<b>Totals by Contributor</b>		\$ 3,782,442.00	\$ 203,046.00	\$ 7,866.00	\$ 1,802,256.74	\$ 1,564,330.00	\$ 7,359,940.74	\$ 9,900,000.00	\$ 7,374,042.40	\$ 24,633,983.14			
<b>DNR Total</b>													
Budget Difference from Original 3 year budget		\$ (2,878,242.00)	\$ 1,922,154.00	\$ 176,934.00	\$ (469,056.74)	\$ 488,270.00	\$ (759,940.74)	\$ -	\$ (774,042.40)	\$ (1,533,983.14)			

\*\*\*\*

\*\*

\*\*\*

Specific Project Amendments	Cnt #	CPNRD	NPNRD	SPNRD	TBNRD	TPNRD	Total NRD	DNR (NET Transfer)	DNR General Fund	Total by Project
J-2 Reservoir (original)	574	\$ 1,168,500.00	\$ -	\$ -	\$ 1,168,500.00	\$ 934,800.00	\$ 3,271,800.00	\$ 4,907,700.00	\$ 6,426,750.00	\$ 14,606,250.00
J-2 Reservoir (revised; Aug-2013)	574	\$ 1,571,662.00	\$ -	\$ -	\$ 1,571,662.00	\$ 1,257,328.00	\$ 4,400,652.00	\$ 7,125,086.16	\$ 8,120,026.70	\$ 19,645,764.86
Phase II North Dry Creek (original)	488	\$ -	\$ -	\$ 39,000.00	\$ -	\$ -	\$ 39,000.00	\$ 58,500.00	\$ -	\$ 97,500.00
Phase II Augmentation North Dry Creek (revised; Apr-2014)	488	\$ -	\$ -	\$ 24,000.00	\$ -	\$ -	\$ 24,000.00	\$ 36,000.00	\$ -	\$ 60,000.00
CPNRD Conservation Easement Package (original)	618	\$ 742,364.00	\$ -	\$ -	\$ -	\$ -	\$ 742,364.00	\$ 1,113,545.00	\$ -	\$ 1,855,909.00
CPNRD Conservation Easement Package (revised; Aug-2014)	618	\$ 623,681.28	\$ -	\$ -	\$ -	\$ -	\$ 623,681.28	\$ 935,521.80	\$ -	\$ 1,559,203.08
Thirty-Mile (original)	616	\$ 2,021,592.80	\$ -	\$ -	\$ -	\$ -	\$ 2,021,592.80	\$ 3,032,389.21	\$ -	\$ 5,053,982.01
Thirty-Mile (revised; Aug-2014)	616	\$ 2,140,275.20	\$ -	\$ -	\$ -	\$ -	\$ 2,140,275.20	\$ 3,210,412.81	\$ -	\$ 5,350,688.01
N-CORPE (original)	778	\$ -	\$ -	\$ -	\$ -	\$ 600,000.00	\$ 600,000.00	\$ 900,000.00	\$ -	\$ 1,500,000.00
N-CORPE (revised; Oct-2014)	778	\$ -	\$ -	\$ -	\$ -	\$ 615,000.00	\$ 615,000.00	\$ 922,500.00	\$ -	\$ 1,537,500.00

Additional funding committed in years 4-6

\* CPNRD transferred money (\$118,683) from Conservation Easement Package to be used for the Orchard Alfalfa Canal Rehabilitation and the Thirty-Mile Canal Rehabilitation Projects

\*\* J-2 Reregulating Reservoir has one payment remaining, additional funding is set aside in years 4-6

\*\*\* Spring 2014 E65 and Elwood Reservoir Recharge Project has a remaining balance of \$0.15 due to an estimation

\*\*\*\* TBNRD will there be more invoices for the North Dry Creek project due to the remaining balance of \$17,160.36

PBC Years 4 to 6 Budget Review

Updated 12/4/2015

PBC Budget Summary	CPNRD	NPNRD	SPNRD	TBNRD	TPNRD	Total NRD	DNR (NET Transfer)	DNR General Fund	Total by Year
Budget Year 4	\$ 301,400.00	\$ 708,400.00	\$ 61,600.00	\$ 444,400.00	\$ 684,200.00	\$ 2,200,000.00	\$ 3,300,000.00	\$1,693,277	\$ 7,193,276.70
Budget Year 5	\$ 301,400.00	\$ 708,400.00	\$ 61,600.00	\$ 444,400.00	\$ 684,200.00	\$ 2,200,000.00	\$ 3,300,000.00		5,500,000.00
Budget Year 6	\$ 301,400.00	\$ 708,400.00	\$ 61,600.00	\$ 444,400.00	\$ 684,200.00	\$ 2,200,000.00	\$ 3,300,000.00		5,500,000.00
<b>Total 3 Year Budget</b>	<b>\$ 904,200.00</b>	<b>\$ 2,125,200.00</b>	<b>\$ 184,800.00</b>	<b>\$ 1,333,200.00</b>	<b>\$ 2,052,600.00</b>	<b>\$ 6,600,000.00</b>	<b>\$ 9,900,000.00</b>	<b>\$ 1,693,276.70</b>	<b>\$ 18,193,276.70</b>

PBC Project	Cnt #	CPNRD	NPNRD	SPNRD	TBNRD	TPNRD	Total NRD	DNR (NET Transfer)	DNR General Fund	Total by Project	NDNR Amount Paid	Project Status	NDNR Remaining	Meeting Motion Ref.
North Platte NRD Lease/Recharge - Cow Camp	see status	\$ -	\$ 221,197.00	\$ -	\$ -	\$ -	\$ 221,197.00	\$ 331,795.50	\$ -	\$ 552,992.50	\$ -	Draft Contract received	\$ 331,795.50	Jun 2013 pg 2 #7 C
Orchard-Alfalfa Canal Rehabilitation	615	\$ 208,314.40	\$ -	\$ -	\$ -	\$ -	\$ 208,314.40	\$ 312,471.60	\$ -	\$ 520,786.00	\$ 312,471.60	Paid - July 22, 2015	\$ -	Jun 2013 Pg 2 #7 B
N-CORPE	778	\$ -	\$ -	\$ -	\$ -	\$ 1,730,071.10	\$ 1,730,071.10	\$ 2,595,106.66	\$ -	\$ 4,325,177.76	\$ -	Under Contract	\$ 2,595,106.66	Aug 2013 pg 3 #8 B
J-2 Reregulating Reservoir	574	\$ 403,161.12	\$ -	\$ -	\$ 403,161.12	\$ 322,528.90	\$ 1,128,851.14	\$ 2,217,386.16	\$ 1,693,276.70	\$ 5,039,514.00	\$ -	Under Contract	\$ 3,910,662.86	Aug 2013 Pg 3 #8 A
Platte Valley Irrigation District	588	\$ -	\$ -	\$ -	\$ -	\$ 2,000.00	\$ 2,000.00	\$ 3,000.00	\$ -	\$ 5,000.00	\$ -	Under Contract	\$ 3,000.00	June 2015 Pg 2 #5 C
Western Irrigation District	587	\$ -	\$ -	\$ 1,800.00	\$ -	\$ 4,200.00	\$ 6,000.00	\$ 9,000.00	\$ -	\$ 15,000.00	\$ -	Under Contract	\$ 9,000.00	June 2015 Pg 2 #5 C
Suburban Irrigation District	586	\$ -	\$ -	\$ -	\$ -	\$ 2,000.00	\$ 2,000.00	\$ 3,000.00	\$ -	\$ 5,000.00	\$ -	Under Contract	\$ 3,000.00	June 2015 Pg 2 #5 C
Fall/Winter 2015 E65 Canal and Elwood Reservoir Recharge Project	800	\$ -	\$ -	\$ -	\$ 149,240.00	\$ -	\$ 149,240.00	\$ 149,240.00	\$ -	\$ 298,480.00	\$ 148,928.00	**Partial Paid - October 14, 2015	\$ 312.00	Aug 2015 Pg 2 #5 C
NPNRD Retirement Agreement - Hardt and Tighe	see status	\$ -	\$ 151,630.50	\$ -	\$ -	\$ -	\$ 151,630.50	\$ 227,445.75	\$ -	\$ 379,076.25	\$ -	*** see below	\$ 227,445.75	June 2015 Pg 4 #7 A
E65 Canal and Elwood Reservoir (4,500 acre ft)	571	\$ -	\$ -	\$ -	\$ 95,940.00	\$ -	\$ 95,940.00	\$ 95,940.00	\$ -	\$ 191,880.00				
Phelps Canal (7,000 acre ft)	571	\$ -	\$ -	\$ -	\$ -	\$ -	\$ -	\$ -	\$ 51,100.00	\$ 51,100.00				
<b>Totals by Contributor</b>		<b>\$ 611,475.52</b>	<b>\$ 372,827.50</b>	<b>\$ 1,800.00</b>	<b>\$ 648,341.12</b>	<b>\$ 2,060,800.00</b>	<b>\$ 3,695,244.14</b>	<b>\$ 5,944,385.67</b>	<b>\$ 1,744,376.70</b>	<b>\$ 11,384,006.51</b>				

Remaining Financial Commitments by Contributor	\$ 292,724.48	\$ 1,752,372.50	\$ 183,000.00	\$ 684,858.88	\$ (8,200.00)	\$ 2,904,755.86	\$ 3,955,614.33	\$ (51,100.00)	\$ 6,809,270.19
--	---------------	-----------------	---------------	---------------	---------------	-----------------	-----------------	----------------	-----------------

\*\*\* NPNRD Retirement Agreement - Hardt & Tighe project calculations were taken from the June 18th meeting minutes. \$126,358.75 x 3= \$379,076.25; NPNRD cost at 40% is \$151,630.50 and DNR cost at 60% is \$227,445.75

\*\* E65 & Elwood Recharge Project reached maximum acre feet at 17,000



**PBC J-2 Regulating Reservoir Project Budget and Payments**

Updated 1/28/2015

Project: J-2	Contract total	Not to Exceed WRCF	Total to Date	Total Requested WRCF	Remaining WRCF
Contract # 574	\$ 19,645,764.00	\$ 15,245,113.62	\$ 9,672,791.42	\$ 15,245,113.62	\$ 5,572,322.20

<b>Budgets</b>					
Contract Budget J-2 Project	DNR	CPNRD	TBNRD	TPNRD	Total
Initial Payment (Anticipated due January 1, 2013)	\$ 4,607,500.00	\$ 475,000.00	\$ 475,000.00	\$ 380,000.00	\$ 5,937,500.00
Remaining Payment (Anticipated due June 30, 2013)	\$ 6,726,950.00	\$ 693,500.00	\$ 693,500.00	\$ 554,800.00	\$ 8,668,750.00
<b>Total of Contract #574</b>	<b>\$ 11,334,450.00</b>	<b>\$ 1,168,500.00</b>	<b>\$ 1,168,500.00</b>	<b>\$ 934,800.00</b>	<b>\$ 14,606,250.00</b>

Contract Budget J-2 Project Amendment	DNR 77.60%	CPNRD 8.00%	TBNRD 8.00%	TPNRD 6.40%	Total 100.00%
Initial Payment (Prior to Sept 15th)	\$ 3,849,013.55	\$ 396,805.52	\$ 396,805.52	\$ 317,444.41	\$ 4,960,069.00
Second Payment (Summer 2014)	\$ 5,698,050.05	\$ 587,427.84	\$ 587,427.84	\$ 469,942.27	\$ 7,342,848.00
Remaining Payment (Winter, 2015)	\$ 5,698,050.02	\$ 587,427.51	\$ 587,427.51	\$ 469,941.96	\$ 7,342,847.00
<b>Total of Amendment 1 to contract #574</b>	<b>\$ 15,245,113.62</b>	<b>\$ 1,571,660.87</b>	<b>\$ 1,571,660.87</b>	<b>\$ 1,257,328.64</b>	<b>\$ 19,645,764.00</b>

<b>Payments</b>						
<b>Initial Estimate:</b>	Invoice:	\$ 3,773,542.50	\$ 389,025.00	\$ 389,025.00	\$ 311,220.00	\$ 4,862,812.50
	NCF Fee:	\$ 81,290.84	\$ 8,380.50	\$ 8,380.50	\$ 6,704.40	\$ 104,756.24
<i>Paid 8/28/2013</i>	<b>Total:</b>	<b>\$ 3,854,833.34</b>	<b>\$ 397,405.50</b>	<b>\$ 397,405.50</b>	<b>\$ 317,924.40</b>	<b>\$ 4,967,568.74</b>
<b>Correction:</b>	Invoice:	\$ 5,937.50	\$ -	\$ -	\$ -	\$ -
	NCF Fee:	\$ 118.75	\$ -	\$ -	\$ -	\$ -
<i>Paid 10/10/2013</i>	<b>Total:</b>	<b>\$ 6,056.25</b>	<b>\$ -</b>	<b>\$ -</b>	<b>\$ -</b>	<b>\$ -</b>
	<b>First Payment Total:</b>	<b>\$ 3,860,889.59</b>	<b>\$ 397,405.50</b>	<b>\$ 397,405.50</b>	<b>\$ 317,924.40</b>	<b>\$ 4,973,624.99</b>
<b>2<sup>nd</sup> Payment Contract:</b>	Invoice:	\$ 5,698,050.00	\$ 587,428.00	\$ 587,428.00	\$ 469,942.00	\$ 7,342,848.00
<b>Adjustment for Correction:</b>	Invoice:	\$ 4,607.50	\$ 475.00	\$ 475.00	\$ 380.00	\$ 5,937.50
	NCF Fee:	\$ 92.15	\$ 9.50	\$ 9.50	\$ 7.60	\$ 118.75
	<b>Total:</b>	<b>\$ 4,699.65</b>	<b>\$ 484.50</b>	<b>\$ 484.50</b>	<b>\$ 387.60</b>	<b>\$ 6,056.25</b>
<b>Adjusted 2<sup>nd</sup> Payment:</b>	2 <sup>nd</sup> Payment based on Contract:	\$ 5,698,050.00	\$ 587,428.00	\$ 587,428.00	\$ 469,942.00	\$ 7,342,848.00
	Adjustment for Correction:	\$ (1,356.60)	\$ 484.50	\$ 484.50	\$ 387.60	\$ -
	<b>2<sup>nd</sup> Payment Adjusted:</b>	<b>\$ 5,696,693.40</b>	<b>\$ 587,912.50</b>	<b>\$ 587,912.50</b>	<b>\$ 470,329.60</b>	<b>\$ 7,342,848.00</b>
	2 <sup>nd</sup> payment estimated NCF Fee:	\$ 115,208.43	\$ 11,889.79	\$ 11,889.79	\$ 9,511.82	\$ 148,499.83
<i>Paid 12/30/2014</i>	<b>2<sup>nd</sup> Payment Total:</b>	<b>\$ 5,811,901.83</b>	<b>\$ 599,802.29</b>	<b>\$ 599,802.29</b>	<b>\$ 479,841.42</b>	<b>\$ 7,491,347.83</b>
<b>3<sup>rd</sup> Payment, Contract, Winter 2015:</b>	Anticipated Payment Amount from Contract:	\$ 5,698,050.00	\$ 587,428.00	\$ 587,428.00	\$ 469,942.00	\$ 7,342,848.00
	Anticipated NCF Fee:	\$ 122,749.19	\$ 12,654.56	\$ 12,654.56	\$ 10,123.64	\$ 158,181.95
	<b>Estimated 3<sup>rd</sup> Payment Total:</b>	<b>\$ 5,817,831.00</b>	<b>\$ 599,776.56</b>	<b>\$ 599,776.56</b>	<b>\$ 479,820.84</b>	<b>\$ 7,497,204.96</b>

<b>Budgeting &amp; Contract Variance:</b>						
Total 1 <sup>st</sup> and 2 <sup>nd</sup> Amended Contract Anticipated	\$ 9,547,063.00	\$ 984,234.00	\$ 984,234.00	\$ 787,386.00	\$ 12,302,917.00	
Budget for PBC Budget Years 1-3:	\$ 11,334,450.00	\$ 1,168,500.00	\$ 1,168,500.00	\$ 934,800.00	\$ 14,606,250.00	
Difference:	\$ 1,787,387.00	\$ 184,266.00	\$ 184,266.00	\$ 147,414.00	\$ 2,303,333.00	
Total 1 <sup>st</sup> and 2 <sup>nd</sup> Actual Payments plus NCF Fees:	\$ 9,672,791.42	\$ 997,207.79	\$ 997,207.79	\$ 797,765.82	\$ 12,464,972.82	
Budget for PBC Budget Years 1-3:	\$ 11,334,450.00	\$ 1,168,500.00	\$ 1,168,500.00	\$ 934,800.00	\$ 14,606,250.00	
Difference (carryover to Budget Year 4):	\$ 1,661,658.58	\$ 171,292.21	\$ 171,292.21	\$ 137,034.18	\$ 2,141,277.18	
Total All Payments as estimated 11/25/2014:	\$ 15,490,622.42	\$ 1,596,984.35	\$ 1,596,984.35	\$ 1,277,586.66	\$ 19,962,177.78	
Contract Budget:	\$ 15,245,113.62	\$ 1,571,660.87	\$ 1,571,660.87	\$ 1,257,328.64	\$ 19,645,764.00	
Difference:	\$ (245,508.80)	\$ (25,323.48)	\$ (25,323.48)	\$ (20,258.02)	\$ (316,413.78)	

Updated 8/4/2015

Project: Orchard-Alfalfa	Contract total	WRCF 60%	Total to Date	Total Requested	
				WRCF	Remaining WRCF
	\$ 4,163,946.00	\$ 2,498,367.60	\$ 3,894,104.27	\$ 2,336,462.54	\$ 161,905.06
Amendment #1	\$ 4,684,732.00	\$ 2,810,839.20	\$ 4,979,936.18	\$ 2,810,839.21	\$ (0.01) *

Funds Expended and Reimbursements Requested for Orchard Alfalfa #615	Orchard Alfalfa		NET	Total	Status
	DNR	CPNRD			
July 2012 - September 2012	\$ 18,443.83	\$ 12,295.89		\$ 30,739.72	Paid 9/6/2013
October 2012 - December 2012	\$ 40,364.18	\$ 26,909.46		\$ 67,273.64	Paid 9/6/2013
January 2013 - March 2013	\$ 20,888.25	\$ 13,925.50		\$ 34,813.75	Paid 9/6/2013
April 2013 - June 2013	\$ 40,965.19	\$ 27,310.13		\$ 68,275.32	Paid 9/6/2013
July 2013 - September 2013	\$ 81,196.28	\$ 54,130.86		\$ 135,327.14	Paid 11/18/2014
October 2013 - December 2013	\$ 380,533.05	\$ 253,688.70		\$ 634,221.75	Paid 2/24/2014
January 2014 - March 2014	\$ 815,793.13	\$ 543,862.09		\$ 1,359,655.22	Paid 5/14/2014
April 2014 Timeframe	\$ 314,892.62	\$ 209,928.42		\$ 524,821.04	Paid 6/12/2014
May 2014 Timeframe	\$ 224,966.11	\$ 149,977.41		\$ 374,943.52	Paid 9/19/2014
June 2014 - July 2014	\$ 371,540.83	\$ 247,693.89		\$ 619,234.72	Paid 9/19/2014
August 2014 - September 2014	\$ 26,879.07	\$ 17,919.38		\$ 44,798.45	Paid 1/21/2015
October 2014-March 2015	\$ 453,653.92	\$ 302,435.95		\$ 756,089.87	Paid 6/10/2015
April - June 2015***	\$ 20,722.74	\$ 131,896.82	***	\$ 329,742.04	Paid 7/22/2015
<b>Total reimbursement requested to date</b>	<b>\$ 2,810,839.21</b>	<b>\$ 1,991,974.49</b>	<b>\$ -</b>	<b>\$ 4,979,936.18</b>	

\*\*\* CPNRD will pay the remaining amount left after DNR amount is spent ---> \$ 177,122.48

\* (0.01) is due to a rounding issue within the spreadsheet

Project: N-CORPE	Contract total	WRCF 60%	NRD 40%	Total Requested	
				WRCF	Remaining WRCF
	\$ 1,500,000.00	\$ 900,000.00	\$ 600,000.00	\$ 900,000.00	\$ -
Revised; October-14	\$ 1,537,500.00	\$ 922,500.00	\$ 615,000.00		\$ 22,500.00

Funds Expended and Reimbursements Requested for N-CORPE #778	N-CORPE		NET	Total	Status
	DNR	TPNRD			
TPNRD PBHEP funding N-CORPE project	\$ 120,680.00	\$ 120,680.00	\$ 60,340.00	\$ 301,700.00	Paid 9/3/2014
TPNRD PBC funding N-CORPE project	\$ 900,000.00	\$ 600,000.00		\$ 1,500,000.00	Paid 9/4/2014
<b>Total reimbursement requested to date</b>	<b>\$ 1,020,680.00</b>	<b>\$ 720,680.00</b>	<b>\$ 60,340.00</b>	<b>\$ 1,801,700.00</b>	

**Project: Cozad Canal**  
**Contract total**      **WRCF 40%**      **Total to date**      **Requested from WRCF**      **Remaining WRCF**  
 \$ 7,739,800.00    \$ 3,095,920.00    \$ 7,028,380.96    \$ 2,664,521.68    \$ (431,398.32)

Funds Expended and Reimbursements Requested for Cozad Canal - 592	IWIP Reference #	Cozad			NET	Total	Status
		DNR	CPNRD				
2011 - June 2012	7114	\$ 266,372.15	\$ 266,372.15	\$ 133,186.08	\$ 665,930.38	Paid 4/10/2013	
July 2012 - Sep. 2012	7643	\$ 83,685.72	\$ 83,685.72	\$ 41,842.86	\$ 209,214.31	Paid 4/10/2013	
Oct 1 - Dec 2012	9148	\$ 161,582.77	\$ 161,582.77	\$ 80,791.38	\$ 403,956.92	Paid 4/10/2013	
Jan - Mar 2013	10811	\$ 304,118.18	\$ 304,118.18	\$ 152,059.09	\$ 760,295.45	Paid 6/10/2013	
April - June 2013	11610	\$ 290,764.02	\$ 290,764.02	\$ 145,382.01	\$ 726,910.04	Paid 8/15/2013	
July - Sep. 2013	12060	\$ 149,221.36	\$ 149,221.36	\$ 74,610.68	\$ 373,053.41	Paid 11/18/2013	
Oct. - Dec 2013	12490	\$ 311,092.25	\$ 311,092.25	\$ 155,546.13	\$ 777,730.63	Paid 2/24/2014	
Jan - Mar 2014	13032	\$ 540,870.45	\$ 540,870.45	\$ 270,435.23	\$ 1,352,176.13	Paid 5/14/2014	
April - April 2014	13152	\$ 207,820.94	\$ 207,820.94	\$ 103,910.47	\$ 519,552.35	Paid 6/12/2014	
May 2014 Timeframe	13617	\$ 143,941.56	\$ 288,662.41	\$ 144,331.20	\$ 721,656.02	Paid 9/24/2014	
May 2014 Timeframe	13635	\$ 192,701.37	\$ 192,701.37	\$ 96,350.68	\$ 481,753.42	Paid 9/24/2014	
June - July 2014	13636	\$ 12,350.91	\$ 14,460.76	-	\$ 36,151.90	Paid 9/24/2014	
<b>Total reimbursement requested to date</b>		<b>\$ 2,664,521.68</b>	<b>\$ 2,811,352.38</b>	<b>\$ 1,398,445.81</b>	<b>\$ 7,028,380.96</b>	\$ 9,340.23	

Unreimbursed amt

**Project: Thirty-Mile**  
**Contract Total**      **WRCF**      **Total to date**      **Requested from WRCF**      **Remaining**  
 \$ 3,961,362.31    \$ 1,584,544.92    \$ 4,248,549.54    \$ 1,804,193.36    \$ (219,648.43)  
 \$ 1,092,619.70    \$ 655,571.82    \$ 239,512.55    \$ 143,707.53    \$ 511,864.29  
 \$ 296,706.00    \$ 178,023.60    \$ 23,183.10    \$ 178,023.60    \$ -

Funds Expended and Reimbursements Requested for Thirty-Mile - 616	IWIP Reference #	Thirty-Mile			NET	Total	Status
		DNR	CPNRD				
2011 - June 2012	7114	\$ 14,277.00	\$ 14,277.00	\$ 7,138.50	\$ 35,692.51	Paid 9/6/2013	
July 2012 - Sep. 2012	7643	\$ 94,147.09	\$ 94,147.09	\$ 47,073.55	\$ 235,367.73	Paid 9/6/2013	
Oct 1 - Dec 2012	9148	\$ 96,813.90	\$ 96,813.90	\$ 48,406.95	\$ 242,034.75	Paid 9/6/2013	
Jan - Mar 2013	10811	\$ 537,384.76	\$ 537,384.76	\$ 268,692.38	\$ 1,343,461.90	Paid 9/6/2013	
April - June 2013	11610	\$ 331,217.05	\$ 331,217.05	\$ 165,608.52	\$ 828,042.62	Paid 9/6/2013	
July - Sep. 2013	12060	\$ 89,685.20	\$ 89,685.20	\$ 44,842.60	\$ 224,213.00	Paid 11/15/2013	
Oct. - Dec 2013	12490	\$ -	\$ -	\$ -	\$ -	-	
Jan - Mar 2014	13032	\$ 336,732.40	\$ 336,732.40	\$ 168,366.20	\$ 841,831.01	Paid 5/14/2014	
April - April 2014	13152	\$ 199,162.41	\$ 199,162.41	\$ 99,581.20	\$ 497,906.02	Paid 6/12/2014	
May 2014 Timeframe	13617	\$ 143,707.53	\$ 95,805.02		\$ 239,512.55	Paid 9/24/2014	
June - July 2014	13636	\$ 13,909.86	\$ 9,273.24		\$ 23,183.10	Paid 9/24/2014	
August - September 2014	13901	\$ 104,773.54			\$ 367,497.96	Paid 1/21/2015	
<b>Total reimbursement requested to date</b>		<b>\$ 1,961,810.75</b>	<b>\$ 1,804,498.07</b>	<b>\$ 849,709.91</b>	<b>\$ 4,878,743.15</b>		

PBHEP funds exhausted 9/24/2014



8200 Cody Drive, Suite A  
Lincoln, Nebraska 68512-9550

Phone: 402.435.5441  
Fax: 402.435.7108

## MEMORANDUM

---

**To:** Ms. Jessie Wietjes  
Nebraska Department of Natural Resources  
P.O. Box 94676  
Lincoln, NE 68509-4676

**From:** Marc Groff

**Date:** 13 November 2015

**Re:** Progress Report – Contract #571

**Period:** 1 September 2015 through 31 October 2015

### Work Completed this Period:

1. Efforts this period were focused on
  - a. Developing NIR datasets for the minimum (No-Till) and maximum (circa 1950s) tillage scenarios.
  - b. Initiated process to update the surface water district attribute information contained in the extended (2006 – 2010) COHYST area land use information produced by DNR. For cells having irrigated acreage supplied with surface water from multiple surface water irrigation districts (Districts), the process will assign the acreage served by each District based on the percentage of area served by each District in that cell in 2005. For any cells in the extended dataset that were not assigned a District in 2005, the single District assignment made by DNR will be used.
  - c. Initiated processing of WWUM area surface water model results from the Irrigation Efficiency Scenarios through the watershed model.

**Billings for this period are \$20,471.25 -- for a billing-to-date of \$45,085.75.**

### Deliverables

1. None.

**Concerns:** None

### Work Projected for Next Period:

1. Continue development of the extended land use information and processing of the Irrigation Efficiency and Tillage Scenarios.



Tax ID# 47-0833338  
 8200 Cody Dr Ste A  
 LINCOLN, NE 68512-9550

# Invoice

Date	Invoice #
11/13/2015	<b>15-1829</b>

Bill To
<b>Department of Natural Resources</b> <b>301 Centennial Mall South</b> <b>PO Box 94676</b> <b>Lincoln, NE 68509-4676</b>

PROJECT DESCRIPTION		BILLING PERIOD		TERMS
<b>POAC Conservation Study</b>		<b>9/1/2015 - 10/31/2015</b>		<b>Net 30</b>
Employee Class	Work Description	Qty	Rate	Amount
Water Resources Special...	Dataset Development and Modeling	118.25	105.00	12,416.25
Senior Engineer	Project Coordination / Dataset Review	26	160.00	4,160.00
Designer/GIS Specialist	General GIS / Database Support	41	95.00	3,895.00
		<b>Total</b>		<b>\$20,471.25</b>
		<b>Balance Due</b>		<b>\$20,471.25</b>

To: PBC Administrators  
From: Jennifer Schellpeper, NDNR; John Thorburn, TBNRD  
Date: December 7, 2015  
Subject: Request for Funds for E65 Canal & Elwood Reservoir and Phelps Canal Projects

Request:

This is a request for funds for an additional groundwater recharge of excess flows into Canals similar to those that took place in the fall of 2015. Details of the groundwater recharge projects can be found in the February 29, 2011, memo from the Department to the PBC administrators, therefore, project details will not be repeated here; rather, this memo will provide a brief overview of the Excess Flow Diversions and project costs. The Department and TBNRD request that the Platte Basin Coalition administrators take action to support this request for funding.

2011 Project Successes:

In the spring and fall of 2011, multiple irrigation canals in the Platte Valley were used to divert river flows for the purpose of recharging groundwater aquifers and to assist with mitigation of anticipated flood flows. The Department and area NRDs supported and participated in these projects. The details of the 2011 projects, supporting arguments, and basic agreements are described in the Department's February 28, 2011, memo. The 2011 projects resulted in the diversion of 141,911 acre-feet of water at a cost of approximately \$550,000. As a result of these projects, approximately 36,000 acre-feet of water will reach the Platte River through accretions over the next 50 years.

2013 - 2015 Project Successes:

The basic principles described in the February 28, 2011, memo also apply to the 2013 – 2015 projects. In the fall of 2013, the Department and area NRDs participated in the diversion of excess Platte River flows for the purpose of groundwater recharge. The project details are described in the Department's August 5, 2014, memo. The 2013 project resulted in the diversion of approximately 43,693 acre-feet of excess flood water for a total cost of approximately \$705,000.

In the spring of 2014, the Department, TBNRD, and CNPPID participated in the diversion of excess Platte River flows for the purpose of groundwater recharge. The project details are also described in the Department's August 5, 2014, memo. The spring 2014 project resulted in the diversion of 13,237 acre-feet of water at a cost of approximately \$516,243.

In the fall of 2014, the Department, TBNRD, and CNPPID participated in the diversion of excess Platte River flows for the purpose of groundwater recharge. The details of the project, supporting arguments, and basic agreements are described in the Department's June 17, 2015 memo. The fall 2014 project resulted in the diversion of 1,763 acre-feet of water at a cost of approximately \$68,757.

In the fall and winter of 2014-2015, the Department, TBNRD, and CNPPID participated in the

diversion of excess Platte River flows for the purpose of groundwater recharge. The details of the project, supporting arguments, and basic agreements are also described in the Department's June 17, 2015 memo. The fall/winter 2014-2015 projects resulted in the diversion of 17,000 acre-feet of water at a cost of approximately \$410,114.

Request New Funds:

TBNRD, CNPPID and NDNR entered into Contract #571 (attached) on November 16, 2015, for the diversion of excess Platte River flows for the purpose of groundwater recharge. Up to 4,500 acre feet of water are contracted for diversion into the E65 and Elwood Canal reservoir. Totals are to be split evenly between the TBNRD and NDNR NET funding, totaling \$191,880 or \$95,940 for each party.

Phelps Canal:

The details are described in the June 17, 2015 memo, for the Platte River Recovery Implementation Program (PRRIP), NDNR, and CNPPID participating in the diversion of excess Platte River flows for groundwater recharge. Phelps Canal project resulted in the diversion of 4,000 acre-feet of water at a cost of approximately \$112,320.

Request New Funds:

Platte River Recovery Implementation Program (PRRIP), NDNR, and CNPPID entered into Contract #571 (attached) on November 18, 2015, for the diversion of excess Platte River flows for the purpose of groundwater recharge. Up to 7,000 acre feet of water are contracted for diversion into the Phelps Canal. Totals are to be split 75% PRRIP and 25% NDNR totaling \$204,400 or \$153,300 for PRRIP and \$51,100 for NDNR General Fund.

PBC:

The total new cost for the two (2) projects detailed in contracts (571) and being submitted to the PBC for budget approval is \$242,980. (see Table 1 for details)

Table 1: Summary of Project Contracts

Contract Number	Project	Irrigator	Diversion Date	NRD	PRRIP	Funding Project	Total Dollars	Project Dollars by NRD	Project Dollars by NDNR	Project Dollars by NET	Estimated Diverted (af)
571	E65/Elwood Reservoir	CNPPID	Nov 2015 – Dec 2016	TBNRD		PBC	\$ 191,880	\$ 95,940	\$ -	\$ 95,940	4,500
571	Phelps Canal	CNPPID	Nov 2015 – Dec 2016		PRRIP	PBC	\$ 51,100*	-	\$ 51,100	\$ -	7,000
Totals: Proposed projects for funding							<b>\$ 242,980</b>	<b>\$ 95,940</b>	<b>\$ 51,100</b>	<b>\$ 95,940</b>	<b>11,500</b>

\*Phelps Canal is receiving dollars from PRRIP and DNR while the total amount for the project is \$204,400; we are only asking for funding of DNR’s share.





TO: Platte Basin Coalition Administrators

FROM: South Platte NRD & Twin Platte NRD – Ann Dimmitt

DATE: December 4, 2015

RE: Request for Funding for the Twin Platte NRD and South Platte NRD Excess Flow Recharge Project– November 2015

The Twin Platte and South Platte NRD's are requesting funding for their Western Irrigation Canal Recharge Project in Deuel and Keith Counties that took place in November 2015. This project is similar to recharge projects that took place in 2011, 2013, 2014, and earlier in 2015. This is a joint project among the Twin Platte NRD, South Platte NRD, NDNR, and the Western Irrigation Canal. The total cost of this project is \$5,000. The NDNR, Twin Platte NRD and the South Platte NRD request the Platte Basin Coalition administrators take action to support this request for funding.

In the spring and fall of 2011, multiple irrigation canals in the Platte Valley were used to divert river flows for the purpose of recharging groundwater aquifers and to assist with mitigation of anticipated flood flows. The Department and area NRDs supported and participated in these projects. The details of the 2011 projects, supporting arguments, and basic agreements are described in the Department's February 28, 2011, memo. The 2011 projects resulted in the diversion of 141,911 acre-feet of water at a cost of approximately \$550,000. As a result of these projects, approximately 36,000 acre-feet of water will reach the Platte River through accretions over the next 50 years.

The Twin Platte NRD took the lead role in administrating this Type 2 recharge project along the Western Irrigation District Canal in Deuel and Keith Counties. Project participants worked with the Western Irrigation District Board to divert excess flows from November 16-21, 2015. The average Stream Depletion Factor for this area is 70%.

This document constitutes a request for funding from the Twin Platte NRD & South Platte NRD. The preapproved percentage breakdowns are as follows: Twin Platte & South Platte NRDs (40%); and the NDNR (60%). Between the Twin Platte NRD and the South Platte NRD their 40% is divided farther as the Twin Platte NRD has 70% of the canal in their district and South Platte NRD has 30% of the canal in their district

Request New Funds:

The Twin Platte NRD, South Platte NRD and the NDNR signed a new task order under the Contract #587 (attached) on November 16, 2015, for the diversion of excess Platte River flows for the purpose of ground water recharge. Contributions of the project are to be split as follows: SPNRD (30% of the DNR 40%) or \$600, TPNRD (70% of the 40%) or \$1,400, and NDNR (60%) or \$3,000.

If there is any other information you would like, please feel free to contact me.



**CENTRAL PLATTE  
NATURAL RESOURCES DISTRICT  
215 Kaufman Avenue  
Grand Island, Nebraska 68803  
(308) 385-6282 FAX (308) 385-6285  
[www.cpnrd.org](http://www.cpnrd.org)**

November 5, 2015

Jennifer J. Schellpeper  
Nebraska Department of Natural Resources  
301 Centennial Mall South  
PO Box 94676  
Lincoln, NE 68509-4676

**Subject: Platte Basin Water Project Coalition (PBC) - Central Platte NRD Use of Existing Budget for the Orchard-Alfalfa Canal Rehabilitation Project**

Dear Jennifer,

Central Platte NRD requests the use of our remaining PBC budget for reimbursement of funds related to the PBC's Orchard-Alfalfa Canal Rehabilitation Project. As reported at the October 6, 2015, PBC meeting, the year's 4-6 budget review showed the Central Platte NRD's remaining financial commitment to be \$292,724.48. We are requesting use of those funds to cover Orchard-Alfalfa Canal Rehab Project costs incurred during the months of April through June 2015. These expenditures exceed the prior approved Project budget of \$4,684,732.00 (reference Amendment to the Agreement Between the State of Nebraska Department of Natural Resources and Central Platte Natural Resources District for the Orchard-Alfalfa Canal Rehabilitation Project - DNR Contract No. 615).

The proportionate funding for costs associated with the Project is Central Platte NRD at 40% and DNR 60%. The PBC Administrators supported the Orchard-Alfalfa Project by unanimous vote at their September 5, 2012, meeting. At that time, the estimated cost for the total Project was \$4,163,946.00. In May of 2013, Central Platte NRD notified the PBC Administrators that updated cost estimates projected a \$520,786.00 budget shortfall. Central Platte NRD requested and the Administrators granted the reservation of that shortfall amount from year four PBC budgets at their meeting on June 3, 2013. This past April, the Nebraska Environmental Trust Fund Board voted to fund the next three years of the PBC and on May 6, 2015, an associated Amendment to DNR Contract No. 615 was finalized. The Amendment to the Contract changed the total Project costs to not to exceed \$4,684,732.00.

Orchard-Alfalfa Canal Rehabilitation Project costs incurred during the April through June 2015 timeframe came to \$329,742.04. Had funds been available at the 60% rate, Central Platte NRD would have been eligible to receive \$197,845.22. In July 2015, DNR did reimburse Central Platte NRD \$20,722.74 and left \$177,122.48 to be covered by Central Platte NRD, in addition to the District's 40% share.

As noted earlier, the amount remaining in the current budget review for Central Platte NRD is \$292,724.48. Sixty percent of that amount equals \$175,634.69. If the April-June Project costs could be covered by the remaining budget, it would leave \$1,487.79 to be paid by Central Platte, in addition to the District's 40%. (Additionally, during the months of August and September 2015, another \$7,292.84 was spent on the Project.)

If our use of these already budgeted funds is approved by the PBC Administrators at our meeting on December 7, 2015, Central Platte NRD would work with DNR to amend the current DNR Contract No. 615.

Please call if you have any questions.

Sincerely,

A handwritten signature in black ink, appearing to read 'mm Czaplewski'.

Mark M. Czaplewski  
Biologist

cc: Lyndon Vogt  
Dianne Miller  
Jesse Mintken

**CENTRAL NEBRASKA PUBLIC POWER AND IRRIGATION DISTRICT  
MEMORANDUM**

To: Jerry Kenny, PH.D., Executive Director - PRRIP  
Jim Schneider, Acting Director - Nebraska Department of Natural Resources  
Diane Wilson, COO/CFO - Nebraska Community Foundation

From: Don Kraus, PE, General Manager - CNPPID

Subject: Quarterly J-2 Regulating Reservoir Report – December 2015

Date: November 23, 2015

---

**Progress Report**

The RJH J-2 Project quarterly progress report is attached.

**Financial Report**

• Funds received to date	\$20,475,000.00
• J-2 Operating Fund	\$11,544,510.91
Construction Phase Decommissioning Fund	\$2,252,443.50
Construction Phase Reserve Fund	\$2,653,158.21
<u>Construction Phase Project Fee</u>	<u>\$389,714.39</u>
Total	\$16,839,827.01
• J2 Project Expenses 1st quarter 2015	\$237,374.10
• J2 Project Expenses 2nd Quarter 2015	\$762,942.12
• J2 Project Expenses 3rd Quarter 2015	\$1,278,949.30
• J2 Project expenses 2013	\$77,400.79
• J2 Project expenses 2014	\$1,570,395.85
• Total J-2 Project expenses paid through Sept 2015:	\$3,927,062.16

**Annual Financial Report**

The annual reports are attached.



## Quarterly Report No. 08

---

### **J-2 Regulating Reservoirs Project**

**Report Period:** September, October, November 2015

The purpose of this Quarterly Report is to provide a general summary of the work performed for the J-2 Regulating Reservoirs Project (Project) during September, October, and November of 2015. This does not include details of all the subtasks performed. The summary of work is organized into the following general categories of work:

- General Project Management and Implementation Tasks
- Permitting Activities
- Land Purchase Activities
- Water Rights Petition Filing
- Engineering Tasks

#### **General Project Management and Project Implementation Tasks**

- The team continued to coordinate through recurring teleconferences.
- Central maintained a Project website to provide information to the public.
- The Team continued to hold topic-specific coordination meetings to support various aspects of permitting and engineering.
- RJH managed specialized sub consultants related to environmental and cultural resource permitting.
- Presented the Concept Update and updated cost opinion to the Governance Committee of the Platte River Recovery and Implementation Program (Program).
- Developed an approach for preparing a cost curve and value engineering alternatives for the Project.
- Provided interim updates to the Program's director and staff on development of the cost curve and value engineering alternatives.
- Presented the cost curve and results of the value engineering studies to a subcommittee of the Program.
- Coordinated with the Program's special advisor for dams regarding value engineering alternatives.

#### **Permitting Activities**

- Developed a draft Phase I cultural resource study plan and published the draft plan for review and comment.
- Continued the wetland delineation and functional assessment of streams in accordance with the final study plan.



- Continued water quality sampling and testing in accordance with final study plan.
- Continued to compile previously-studied project alternatives in response to meeting with USACE regarding the Section 404 permit. USACE noted that the application will need to demonstrate that the preferred alternative is the least damaging practicable alternative (LDPA) for USACE to issue a 404 permit. Work on this task was paused following a discussion with USACE in early October in which we explained to USACE that the project concept might change.
- Continued development of the Phase II cultural resource study plan.
- Filed two reports for on-site buildings to enable SHPO evaluation of eligibility for the national register of historic buildings. Reports for other structures will not be filed until Central owns the properties.

### **Land Purchase Activities**

- Completed acquisition of a second property at the Project site (Neben).
- Paused negotiations with remaining landowners for property acquisition.
- Purchased option on about 540 acres of potential trade lands.

### **Water Rights Petition Filing**

- No work was performed on this task.

### **Engineering Tasks**

- Continued to monitor the groundwater levels at 22 monitoring well locations along the Phelps Canal and around the proposed reservoir areas.
- Continued laboratory testing and compilation of geotechnical data.
- Completed the hydrologic and hydraulic analysis for the Probable Maximum Flood on the Unnamed Tributary.
- Completed updating the concepts and prepared a draft memorandum to explain the Concept Update and updated opinion of probable project costs (OPPC).
- Began to identify which design criteria could be adjusted to help reduce costs.
- Began preparing a cost curve by developing concepts for multiple reservoir sizes of Reservoir 1 (as presented in the Concept Update memorandum).
- Began evaluation of potential canal modifications to reduce costs.
- Began identifying and evaluating potential value engineering (VE) concepts for a single reservoir Project.
- Developed a cost curve and potential value engineering concepts.
- Began evaluating a VE concept proposed by the special advisor to the Program.
- Prepared to present the cost curve and results of a VE evaluation to the Program GC in December.

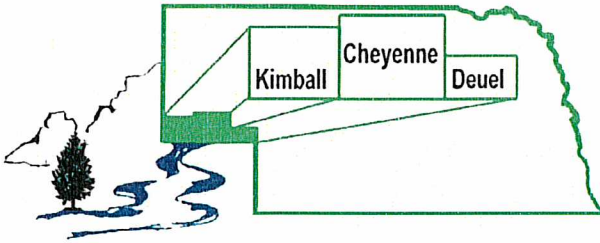


## Tasks Anticipated for the Next Quarter

- Continue to collect water quality data in accordance with the approved study plan.
- Address public comments and file with FERC the final study plan for Phase I cultural Resource work.
- Complete and file with the Nebraska SHPO the reports from the Phase I and Cultural Resource studies.
- Continue to develop the Phase II study plan for cultural resources.
- Complete the wetlands survey and stream functional assessment. Evaluate potential changes resulting from a revised Project Concept.
- Provide technical assistance for selecting an approach to advancing Project development.
- Potentially revise the Project scope and schedule based on direction received from Program.
- Potentially resume negotiations to access land for continued geotechnical and cultural resource studies.

## Potential Issues:


- The key issue for the Project at this time is to define project requirements, goals, and constraints and select one or more concepts to advance towards design.



# South Platte Natural Resources District

551 Parkland Drive, PO Box 294 Sidney, Nebraska 69162  
(308) 254-2377 FAX (308) 254-2783 www.spnrd.org

## Memo

**To:** Platte Basin Coalition Sponsors  
**From:** Rod L. Horn, General Manager, South Platte Natural Resources District   
**Date:** November 25, 2015  
**Re:** Project Summary for the Oliver Reservoir Streamflow Enhancement Project

The South Platte Natural Resources District (SPNRD) is requesting approval for reimbursement for a streamflow enhancement project. The project is being pursued to meet the goals and objectives of the SPNRD's Integrated Management Plan (IMP). The project is more fully described in the attached project proposal from Olsson Associates, who the SPNRD intends to work with on the project. Olsson Associates has estimated a budget for the project of \$162,000, which does not include any expenses related to construction. Additionally, the SPNRD expects that the project could require the lease or purchase of water allocations or certified acres to provide water for the project. It is anticipated that the cost of project development, construction, and/or water acquisition will equal or exceed the SPNRD's allocation of Platte Basin Coalition (PBC) funds. Therefore, the SPNRD requests that the PBC approve the expenditure of PBC funds on the project over a two-year period as detailed below.

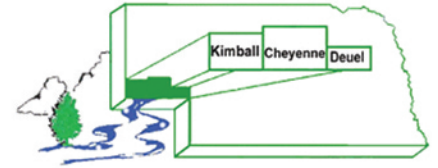
<u>Project Name</u>	<u>FY</u>	<u>SPNRD</u>	<u>NDNR</u>	<u>TOTAL</u>
Oliver Reservoir Streamflow Enhancement	2016	\$92,400	\$138,600	\$231,000
	<u>2017</u>	<u>\$92,400</u>	<u>\$138,600</u>	<u>\$231,000</u>
	Total	\$184,800	\$277,200	\$462,000

The SPNRD is asking for approval for the full reimbursement of \$277,200 from the PBC administrators.





SOUTH PLATTE



NATURAL RESOURCES  
DISTRICT

# PROPOSAL FOR OLIVER RESERVOIR STREAMFLOW ENHANCEMENT PROJECT

*November 24, 2015*

PREPARED FOR:

South Platte  
Natural Resources District

## TABLE OF CONTENTS

Background and Overview .....	3
Phase I - Project Administration / Project Management.....	4
Phase II – Development of Options.....	5
Task 1 – Hydrogeologic and Hydraulic Water Balance Analysis .....	5
Task 2 – Public Participation Process .....	5
Task 3 – Topographic Survey.....	6
Task 4 – Environmental Permitting Applications .....	6
Task 5 – Geotechnical Services .....	7
Task 6 – Preliminary Design .....	10
Phase III – Design / Plans / Permitting .....	10
Task 1 – Well, Piping and Infrastructure Design and Plans.....	10
Task 2 – Floodplain & NPDES Permitting .....	11
Phase IV – Bidding / Construction.....	11
Task 1 – Bidding Services .....	11
Task 2 - Construction Administration, Observation, & Testing.....	13
Budget .....	17

## Background and Overview

The South Platte Natural Resources District (SPNRD) was designated fully appropriated on September 30, 2004, by the Department of Natural Resources (DNR) pursuant to provisions of the Groundwater Management and Protection Act (GWMPA). Prior to this designation, the DNR also designated the integrated water management subarea of the Lodgepole Creek subbasin as overappropriated. As a result, the DNR and the five NRDs in the overappropriated portion of the Platte River developed a Basin-Wide Plan and the DNR and the SPNRD developed an integrated management plan (IMP) for the SPNRD that addresses the statutory requirements that are triggered by these designations.

As part of the IMP, the SPNRD is required to offset any new depletions to streamflow that are caused by any increases in groundwater development that occurred subsequent to July 1, 1997. This requirement is intended to satisfy Nebraska's obligations under the Platte River Recovery Implementation Plan (PRRIP). Ultimately, the IMP is required to return the overappropriated area of the SPNRD to a fully appropriated condition. To address these requirements, the SPNRD, the other overappropriated basin NRDs, and the DNR formed the Platte Basin Coalition (PBC). The purpose of the PBC is to jointly undertake projects to satisfy the terms of the PRRIP, requirements of the GWMPA, and Provisions in the IMPs and the Basin-Wide Plan. The DNR contributes funding to the PBC through the Water Resources Cash Fund (Fund)

One of the non-regulatory actions items identified in Chapter 9 of the SPNRD's IMP is "management of Oliver Reservoir." Oliver Reservoir is located in Kimball County and is owned and operated by the SPNRD. The reservoir provides flood control and recreation benefits, with a surface area of 264 acres at full conservation pool. A map of the reservoir is included with this proposal as Attachment A. The purpose of this proposal is to develop management alternatives for Oliver Reservoir that would (1) fit within the statutory framework for utilization of the Fund, and (2) maintain and/or enhance recreational opportunities at Oliver Reservoir. In order to accomplish this goal, this proposal will include a public participation process that will provide input on desired recreational aspects for Oliver Reservoir as well as to solicit feedback on the management options that are developed under this project.

More specifically, this project aims to reduce consumptive uses of groundwater and/or increase streamflows through direct augmentation of the inflows to Oliver Reservoir. Augmentation water would be provided through a new or existing well and the source of the augmentation water would be through new allocations by the SPNRD Board and/or through the lease of allocations from groundwater irrigators in the vicinity of Oliver Reservoir. In order to evaluate these potential options for streamflow augmentation, this project will include the analysis of the impact of either transferring uses from irrigation to augmentation or additional pumping of groundwater into the Reservoir. The project will also involve design and construction of the necessary infrastructure needed to implement one of the options that are developed. The remainder of the budget for the project is

reserved to finance water leasing if that is part of the final option that is selected for implementation.

Ultimately, the project will be beneficial and is consistent with the goals of the PBC as any selected option will increase streamflow in Lodgepole Creek and may also reduce consumptive use of groundwater. While the augmentation water will be supplied directly into Oliver Reservoir, this will nonetheless increase streamflows downstream of Oliver Reservoir by raising the level of Oliver Reservoir, thus increasing the rate at which water seeps out of Oliver Reservoir into the stream below. The Oliver Reservoir Hydrology and Hydrogeology Study (Olsson Associates, 2003) determined that seepage from the reservoir accounted for almost 50% of the outflows, with the other approximately 50% split between evaporation and overflow/allowed spills. Therefore as approximately 75% of augmentation water supplied to Oliver Reservoir can be expected to appear as streamflow below the reservoir. The project may also reduce consumptive use of groundwater in the vicinity of the reservoir by leasing irrigation allocations and delivering that water to Oliver Reservoir. The amount of this water that would be expected to be lost to direct evaporation from the reservoir would only be in the range of 25%, while the evapotranspiration of water used for irrigation in the area is likely to be 80-90% or higher, depending on the irrigation efficiencies.

Direct streamflow augmentation using a new or existing irrigation well was one of the four options that was identified as a potential solution for improved management of Oliver Reservoir in the 2003 Olsson Associates study. An advisory Committee associated with this study also recommended that any changes be "based on an overall objective for Oliver Reservoir, i.e., the desired pool level or a range of pool levels during summer months." This project will take the next steps and work to implement one of the recommended options from the 2003 report using the recommended process for doing so.

### **Phase I - Project Administration / Project Management**

Olsson will provide a single Project Manager to work with the Client's Project Manager to assure timely completion (according to schedule and permitting requirements) of quality work products within available budgetary resources. Olsson will be responsible for:

- **Project Management**
  - Establishing and managing the project schedule and budget.
  - Defining individual tasks and establishing the cost and schedule of each task.
  - Providing monthly progress reports and invoices, showing percent of work completed for each task.
  
- **Coordination with Others**
  - Coordinate with agencies and other stakeholders that are involved with this project. This involves one-on-one meetings with agencies involved including the South Platte NRD, Nebraska Department of Natural Resources, US Army Corps of Engineers, and other stakeholders as mutually agreed to by Client

and Olsson.

- **General Project Meetings**

- Once notice to proceed has been received, Olsson will schedule and lead a kick-off meeting with agencies and other stakeholders involved. The Client will supply a list of project stakeholders to be invited, and Olsson will send out notifications of the meeting.
- Olsson will schedule and conduct progress meetings with the Client and will distribute an agenda in advance of each meeting. Three (3) meetings are anticipated. Additional meetings beyond this amount shall be charged at a rate per meeting.

## **Phase II – Development of Options**

Olsson has already collected substantial engineering and GIS basemap data for the project area. In order to evaluate the options for additional water supply, Olsson shall perform a hydrogeologic and hydraulic water balance analysis and conduct a series of public meetings based on the alternatives.

### **Task 1 – Hydrogeologic and Hydraulic Water Balance Analysis**

Olsson will prepare a hydrogeologic and hydraulic water balance analysis of the proposed water supply alternatives.

- Using existing groundwater models and hydrogeologic data, Olsson will evaluate the options for direct augmentation of the inflows to the reservoir with groundwater. The analysis will evaluate the feasibility of retiring existing irrigation wells and of drilling new wells in the area in order to identify the most sustainable source of groundwater to be used to augment inflows to the reservoir.
- Using HEC-HMS, Olsson will refine the existing analysis of drainage area hydrograph versus frequency to route storm runoff events through Oliver Reservoir to evaluate the potential for storage of excess surface water flows as another source of additional water for the reservoir.
- The hydrogeologic and hydraulic water balance analysis will then be used to help refine the proposed alternatives.

### **Task 2 – Public Participation Process**

Olsson shall provide coordination and facilitation support to assist in the development of augmentation water supply alternatives for Oliver Reservoir.

- Olsson shall coordinate three (3) open meetings with stakeholders to discuss the alternatives analysis. The meetings will provide stakeholders and the public an opportunity to consult and collaborate on the formulation of, evaluation, and recommendations for the augmentation water supply.
- Olsson shall incorporate the input received from the meetings in development of design alternatives.

### **Task 3 – Topographic Survey**

In order to complete design, detailed topographic survey information shall be collected along the preferred pipe alignment from a new or existing well location(s).

Olsson will conduct a topographic survey consisting of a 100 foot wide corridor along a route from a pump to Oliver Reservoir. Utilities will be gathered by observed evidence and by a One Call utility engineering notification. Coordination with the utility companies will be done to provide marking and maps of the utilities in the areas. Topographic survey information will be collected at intervals not to exceed 50 feet. The survey datum will be from published NGS control points, using the NAD83 horizontal datum and NAVD88 vertical datum. Control points and benchmarks will be left at each area described above.

A search for section and property corners will be performed. A trip to the county courthouse will be made to retrieve plats and subdivisions in the survey area. Also, the Nebraska State Surveyor's Office webpage will be used to research filed surveys.

A drawing will be created with 1-foot contours of the areas described above. It will include improvements, utilities, trees, and culverts. Street will be labeled and rights of way will be shown. Lot and deed lines will be shown on this survey. This drawing can be used for design and analysis. This is not a legal survey. Simple descriptions and exhibits can be created for \$450 each. Lots will be labeled with legal descriptions only. An ownership map is not included in this fee, as one can be created when it is known if lands needed to be retained for the project.

### **Task 4 – Environmental Permitting Applications**

This component involves the planning, and coordination of design elements for the project with an emphasis on soils, environmental impacts, wetlands, floodplains, and stormwater. Engagement of and working with natural resources agencies, including the U.S. Army Corps of Engineers (USACE), will be a critical part of this work component. The project team will strive to prepare and provide designs for the Project elements including piping and new well locations that minimize impacts to "waters of the United States" and meet the requirements of a Nationwide 404 permit, thereby avoiding the much more detailed and lengthy Individual Permit process if possible. It is assumed that no new permitting will be needed for Oliver Reservoir since the reservoir size or design is not changing.

- Olsson will conduct a pre-application meeting with the USACE to inform them of the project and request their comments/feedback in regard to potential permitting issues.
- Olsson shall perform a Jurisdictional Wetland Evaluation in accordance with the methodology of the USACE 1987 Wetland Delineation Manual and the 2010 Great Plains Regional Supplement, v. 2.0. The delineation will include:
  - Review of available information sources prior to field investigation, including National Wetlands Inventory maps, county soil surveys, topographic maps, and aerial photos;
  - Survey of vegetation to determine presence/absence of hydrophytic species;
  - Observation of project area to determine presence/absence of wetland hydrology;

- Assessment of the stream and drainage channel banks, and;
- Assessment of soils by digging small soil pits to determine presence/absence of hydric soils.

Routine Wetland Delineation Forms will be completed for each delineation location. Wetland acreage will be mapped in the field with hand-held sub-meter accuracy GPS. If other waters of the U.S. are identified, the Ordinary High Water Mark (OHWM) will be marked by GPS. Photos will be taken of all wetlands and waters. Elevation surveying of the wetland boundaries is not included in the basic services. Wetlands will be identified by Cowardin classification and Nebraska sub-class. A wetland delineation report will be prepared that documents the findings.

Please note that in Nebraska, the Omaha District of the USACE requests that delineations be conducted during the growing season, roughly May 1 to November 1. If a winter delineation is required, the USACE may require a second site visit during the growing season. Fees for a second site visit are not included in this fee proposal.

At this time, the footprint of the project is not known. For the purposes of the fee proposal, it is assumed that a corridor approximately 1 mile long and 50 feet wide will be delineated, as well as areas around the potential pipe outfall and the existing dam outlet. If additional or larger areas will need to be delineated, additional fees will be negotiated.

- As part of the permitting process, coordination with agencies including U.S. Fish and Wildlife Service, Nebraska Game and Parks Commission, and the Nebraska State Historical Preservation Office may be required. It is not anticipated that a meeting with them will be required; if it is, additional scope and fee will be negotiated.
- If the wetland delineation indicates that wetlands/waters are present on the site and will be impacted, a report of delineation findings and a permit application/Pre-Construction Notification will be submitted to the USACE. The report will include text describing wetlands, color photographs of the site, and maps depicting wetland location(s) and acreage(s). Three copies of a jurisdictional wetland report will be prepared.
- A Section 404 permit application will be prepared. It is assumed that impacts to waters of the U.S. will meet the criteria for a Nationwide Permit, and thus fees are based on this level of permitting. If an Individual Permit is required, additional fees will apply.
- This project scope and associated fees do not include other surveys or permits that may be required by the USACE or other agencies. Specifically, this scope excludes detailed threatened and endangered species surveys, migratory bird surveys, cultural resource survey, Section 6(f) coordination, or Mitigation Design or Compensatory Mitigation documentation. If specialized biological and/or cultural studies, or design or monitoring of mitigation for impacts, are required by agencies, additional fees also may apply.

## **Task 5 – Geotechnical Services**

### **Project Background**

Olsson understands that this project will include geotechnical analysis with a written report for a new water line running from nearby center pivot to the Oliver Reservoir. In addition to the water line, a limited geotechnical analysis will be completed on the Oliver

Reservoir dam. It is our understanding that the permanent pool elevation will remain unchanged.

We have assumed that the video inspection of the toe drain will be completed by others and that the principal spillway can be visually inspected.

Upon reviewing soil logs in the area, Olsson has prepared this proposal with the understanding that the subsoil profile will likely be alluvial sand and gravel. The proposed depths were determined from this information to provide the best delineation of the sub-surface strata for this project and provide the necessary recommendations.

Olsson shall perform professional services as requested by Client pursuant to the provisions provided herein. These services will include Professional Consultation Services incidental thereto.

### **GENERAL**

Olsson shall perform for Client professional services in all phases of the Project to which this Agreement applies as hereinafter provided. These services will include serving as Client's professional representative for the Project, providing professional consultation and advice and furnishing customary services incidental thereto.

### **DRILLING SERVICES**

#### **1. Field Exploration**

- Olsson proposes to use a truck-mounted drill rig to complete the following soil test borings and Electronic Cone Penetration (CPT) holes:
  - Five (5) soil test borings to depths of 10 feet each.
  - Three (3) soil test borings to depths of 15 feet each.
  - One (1) soil test boring to a depth of 70.
  - One (1) soil test boring to a depth of 70.
  - Two (2) CPT test holes to approximate depths of 40 feet each.
  - Install two (2) piezometers to approximate depths of 20 and 45 feet to include a return trip at a later date for additional water measurements.The soil borings will be advanced to the depths proposed, or to refusal, whichever is shallower. This proposal is based on a total drilling footage of 225 linear feet and approximately 80 linear feet of.
- Contact Diggers Hotline of Nebraska to locate underground utilities. To insure the safety of the crew on site, Owner must inform Olsson the location of all private utilities and private utility service connections. Cost of locating private utility lines and private service connections shall be Owner's responsibility. Olsson is not responsible or liable for damage to any private utility or private service connection.
- All boring locations must be readily accessible. Any cost of making boring locations accessible is Owner's responsibility. Olsson will not perform work until boring locations are accessible and acceptable to Olsson's satisfaction.
- Drilling rigs are heavy equipment. Disturbance of natural surroundings including but not limited to soil indentations, concrete cracking and damage



to underground sprinkler systems, may occur. Olsson shall not be liable or responsible for any site disturbance that may occur as a result of bringing equipment on site. Owner accepts full responsibility for site disturbance.

- Sampling of soils in general accordance with ASTM D-1586 and ATSM D-1587.
- Obtain groundwater levels in the test borings at the time of drilling and upon completion of the drilling operations.

## **GEOTECHNICAL SERVICES**

### **1. Laboratory Services**

- As soil conditions dictate, laboratory testing may include visual soil classification (ASTM D-2488), unconfined compression tests (ASTM D-2166), thin-walled tube density tests (ASTM D-2937), moisture content tests (ASTM D-2216), Atterberg limit tests (ASTM D4318), a Standard Proctor test (ASTM D-698), a one-dimensional consolidation test (ASTM D-2435).

### **2. Engineering Analysis and Report Preparation-Water Lines**

- Anticipated groundwater concerns, along with recommendations for addressing these concerns during construction, if appropriate. Actual dewatering techniques involving design criteria for well points and/or groundwater cut-off walls is not included as part of the scope of services.
- Placement and compaction of backfill installed in area of utility.
- Analysis of the effect of weather and/or construction equipment on soils during construction.
- Lateral earth pressure recommendations.
- Recommendations, if necessary, regarding subgrade stabilization criteria in the area of the utility.

### **3. Engineering Analysis and Report Preparation-Existing Dam**

- Perform field observation
- Inspect embankment for cracks, vegetal cover, erosion and general maintenance concerns (deficiencies). Inspection procedures to generally follow DNR guidelines.
- Inspect embankment toes, groins and abutments for deficiencies.
- Inspect outlet works; internal inspection of closed conduit spillways and external inspection of open spillways.
- Process inspection data into report format
- Prepare inspection photo logs.
- Perform slope stability and seepage calculations for one cross section on the dam.
- Evaluate potential cause(s) of dam deficiencies, if needed. Additional assessment/evaluation requirements will be outlined for a Phase II investigation will be provided, if applicable.
- Provide recommendations on further repair/rehabilitation/investigation that may be required by dam owner (all efforts other than identifying components

- that may need further investigation to be conducted outside this contract in a Phase II investigation).
- Provide maintenance recommendations.

### **Task 6 – Preliminary Design**

Preliminary design plans will be developed using the information collected from the previous tasks for design of the new or existing reservoir water supply well and piping. Preliminary design plans will show the location of the proposed new well, piping alignment, typical cross sections and sizes, details, electrical, and other related tasks, as applicable. It is anticipated that manual controls will be employed in energizing the well. This task also includes updating the preliminary opinion of probable construction costs for the project.

- OLSSON will submit five (5) copies of the 30% preliminary plans to the Client. OLSSON will also submit five (5) copies of the 60% preliminary plans to the Client. OLSSON will attend one meeting with the CLIENT to present and summarize the 30% preliminary plans. This estimate does not include meeting with the CLIENT following 60% design. Review comments will be collected and mutually agreed to review comments will be incorporated into the preliminary plan.

### **Phase III – Design / Plans / Permitting**

#### **Task 1 – Well, Piping and Infrastructure Design and Plans**

OLSSON shall design the water supply well (if a new well is required), piping and infrastructure for the augmentation water needed at Oliver Reservoir. OLSSON will provide final construction plans and specifications to the CLIENT for use in construction. The following items will be included in the design task.

- Erosion Control. OLSSON will design erosion control measures for use during construction.
- Prepare design for drainage structures including selection of pipe materials, gate materials, and flap gates if necessary.
- Our hydrogeologic and geotechnical experts will coordinate with the project designers to provide design guidance regarding soil and hydrogeologic properties. The geotechnical engineer will prepare a specification for soil testing requirements to be implemented during construction. The hydrogeologist will prepare a specification for well performance testing to be implemented during well construction. The civil engineer prepare a specification for piping and infrastructure testing during construction.
- Well design will determine well design criteria (location, depth, casing diameter, screen length, screen slot size openings, gravel pack, and well capacity) based upon extent of information regarding nearby wells and the test hole drilling process, provided as part of construction, and in accordance with NAC Title 178 for non-potable wells. It is anticipated that either one or two wells will be required. Design of the well discharge piping, flow meter, and outfall to the reservoir will be provided. It is our understanding that the well and piping

will be constructed within land available to the NRD. Electrical power supply and manual controls for the well pump and motor will be provided and coordinated with the electrical utility. No provisions for easements, emergency generation or connections will be provided, but can be included as additional services, if desired by the Owner.

- Prepare technical specifications based on ENGINEER'S standard specification sections and front end documents, which will be tailored as necessary for selection of construction contractors on a competitive bid basis.
- QA/QC Review. An in-house quality control review will be made at the 30% and 95% completion level. The review will include review for compliance with original design parameters, and regulatory agency standards. The review will assure that complete and concise bidding documents have been provided.
- OLSSON will submit five (5) copies of the 95% preliminary plans and specifications to the Client. OLSSON will attend one meeting with the CLIENT to present and summarize the 95% preliminary plans and specifications. Client review comments, as appropriate, will be incorporated into the plans and specifications.
- Prepare final plans, specifications and construction cost estimate for use in agency submittals and bidding.
- Olsson will submit final CAD and GIS files to CLIENT for their records.

## **Task 2 – Floodplain & NPDES Permitting**

- Develop a Storm Water Pollution Prevention Plan (SWPPP) for the Project, and provide completed application form for use in filing for discharge authorization for storm water from construction site under the current NPDES General Permit. Assist in consultations with appropriate authorities. Provide additional information as requested by the Nebraska Department of Environmental Quality (NDEQ) and other regulatory agencies.

## **Phase IV – Bidding / Construction**

### **Task 1 – Bidding Services**

Following the design process, Olsson will provide services during the project bidding phase.

- There may be reasons to split the project up, depending on the final design, construction scope, schedule, and other circumstances. Olsson will coordinate with the Client to determine if the project needs to be let as one bid package, include bid alternatives, or be bid in multiple bid packages.
- Olsson will prepare the appropriate bid documents for inclusion in the specifications for the project.
- Prepare Invitation for Bids and provide to Client for advertisement.

- Distribute Bid Invitations
  - Identify potential contractors and suppliers, and distribute copies of the Invitation to bid for the contract.
  - This will include electronic plans and specs on CD for use by the Client in distribution.
- Prepare and Distribute Plans and Specifications
  - Prepare and distribute two (2) sets of construction contract drawings and specifications to the Client and up to three (3) sets to plan service agencies for use during bidding. Prepare and distribute construction contract documents to potential bidders. Distribute up to three (3) sets of construction drawings and specifications to the successful bidder.
- Maintain and Distribute Plan Holders List
  - Maintain a record of prospective bidders and suppliers to whom drawings or specifications have been issued. Document plan distribution and revise master list as requests are made for bidding documents. Company name, contact information, telephone and fax numbers will be collected and stored in the database. Distribute plan holders list to potential contractors with an Addenda or as separate issue if no addenda have been issued.
- Olsson will prepare an agenda and conduct a pre-bid conference in order to answer contractor questions prior to bid letting, if desired by the owner.
- Interpret Plans and Specifications
  - Interpret construction contract drawings and specifications, and provide written responses (as required) to questions from bidders requiring clarification during the bidding period.
- Prepare and Distribute Addenda
  - Prepare and issue addenda to the construction contract documents when required.
- Bid Opening
  - Attend, at a date and time selected and a place provided by the Client, the opening of bids for construction of the project.
- Review Bids and Bidder Qualifications
  - Review and evaluate the qualifications of the bidders and bids received.
- Prepare Recommendation of Award
  - Make a written recommendation to the Client concerning award of the contract.
- Review Insurance Certificates
  - Review insurance certificates with respect to compliance with specified coverage limits.
- Distribute Executed Contract Copies
  - Prepare and distribute three (3) conforming copies of the construction

contract documents and contracts to serve as the official documents by the appropriate parties during construction of the project. This does not include modification to plans and technical specifications and re-issuing of the construction contract documents.

## **Task 2 - Construction Administration, Observation, & Testing**

**The following is a list of anticipated construction services. The final fees will be negotiated and added by contract amendment at a later date, once final plans and specifications have been completed.**

- **Construction Administration** - Olsson will perform Construction Administration Services during the construction phase of the project. In the performance of these services, Olsson shall not have authority or responsibility to supervise, direct, or control the Contractor's work or the Contractor's means, methods, techniques, sequences, or procedures of construction. Olsson shall not have authority or responsibility for safety precautions and programs incident to the Contractor's work or for any failure of the Contractor to comply with laws, regulations, rules, ordinances, codes or orders applicable to the Contractor furnishing and performing the work. Specific services to be performed by Olsson are as follows:
  - QA/QC Constructability Review
    - Olsson will perform a constructability review of the contract documents prior to bidding and the start of construction.
  - Pre-construction Conference
    - Olsson will prepare an agenda and conduct a pre-construction conference. The pre-construction conference will include a discussion of the Contractor's tentative schedule, procedures for transmittal and review of the Contractor's submittals, processing payment applications, critical work sequencing, change orders, record documents, and the Contractor's responsibilities for safety and first aid. Procedures for dealing with unforeseen problems will be developed and discussed.
  - Progress Meetings
    - Olsson will prepare an agenda and conduct monthly progress meetings to assist in resolution of conflicts and scheduling of the project. Progress meeting will include discussion of the Contractor's construction schedule, site coordination and defects and deficiencies in the work of the Contractor.
  - Periodic Site Visits
    - Make periodic visits to the construction site to observe progress of the work and consult with the Client and Contractor concerning problems and/or progress of the work. The number anticipated for the construction phase of the work shall be as required for the orderly execution of work.
  - Investigate/Negotiate Contractor Claims
    - Investigate and process all necessary construction contract change order justifications and related changes to the contract documents as may be necessary. Negotiate with the Contractor to assist in obtaining a fair price for the work. Said negotiation will be subject to the approval of the Client.

- Review Contractor's Submittals
  - Respond to fabrication and field questions and proposed changes
  - Evaluate conflicts involving utilities
  - Olsson will review Contractor submittals, for equipment, materials, and construction. Submittals shall include all shop drawings, request for information and project correspondence. Submittals will be logged and date stamped upon receipt. All requests for variations from the contract documents will be reviewed with the Project Engineer and Owner before issuing an approval to the contractor. Such reviews shall not extend to means, methods, techniques, sequences, or procedures of construction or to safety precautions and programs incident thereto.
- Pay Requests
  - Review and process the Contractor's monthly payment requests, and forward to the Owner for payment.
- Process Change Orders
  - Olsson will coordinate the preparation of any change orders that are agreed to by the contract parties. Documentation to support the basis for the claim will be developed, as well as justification for change to the contract price. Olsson will review all change orders to ensure that the Owner's interests have been protected in the proceedings, and all change order requests will be discussed with the Owner before they are developed in final form.
- Contract Document Clarification
  - Clarify construction contract documents when requested by the Owner or Contractor. When authorized by the Owner and Contractor, Olsson may interpret construction contract drawings and specifications upon request by subcontractors and suppliers.
- Project Files
  - Olsson will set up and maintain appropriate project files related to the project. Included in the project file shall be all project correspondence, work change directives, change orders, meeting minutes, request for information, material certifications, test reports, and project schedules.
- Project Documentation
  - Olsson will prepare and keep detailed notes, computations and measurements; records of quantities of pay items constructed, test reports or basis of acceptance of installed materials and a daily record of the Contractor's operations.
- Substantial Completion
  - Upon receipt of written notification from the Contractor of substantial completion, schedule and attend a walk through to identify items to be completed or corrected prior to accepting substantial completion.
- Final Completion
  - Schedule and attend a final completion walk through to identify items requiring completion or correction prior to final payment.
- **Construction Observation** - Olsson will furnish Construction Observation as needed, starting at the date of the Notice to Proceed. Olsson will observe the Contractor's work and perform the services listed below. Olsson shall not have the responsibility for the superintendence of construction site conditions, safety, safe

practices or unsafe practices or conditions, operation, equipment, or personnel other than employees of Olsson. This service shall in no way relieve the Contractor of complete supervision of the work or the Contractor's obligation for complete compliance with the drawings and specifications. The Contractor shall have sole responsibility for safety and for maintaining safe practices and avoiding unsafe practices or conditions. Specific services performed by Olsson are as follows:

- Pre-construction Meeting
  - Participate in the pre-construction conference. Prepare and distribute meeting minutes to all in attendance.
- Progress Meetings
  - Participate in monthly progress meetings. Prepare and distribute meeting minutes to all in attendance.
- Project Documentation
  - Compile documentation to support the basis of all Requests For Information (RFI), Field Orders, Work Change Directives, and Change Orders.
- Pay Requests
  - Verify quantities of stored materials and completed work. Prepare and process payment requests based on field verifications of quantities requested by the Contractor.
- Field Observation
  - Perform Field Observation of the general progress of the work to assist in determining if the work is proceeding in general accordance with the plans and specifications. All discrepancies will be reported to the Owner, Contractor, and Project Engineer. Project Engineer shall approve corrective measures prior to correcting work.
  - Verify all testing conforms to the contract documents.
- NPDES
  - Review the Contractor's documentation of the erosion and sediment control. Notify the Owner and the Contractor when documentation is observed to be in non-compliance. The implementation and documentation required to meet the requirements of the NPDES permit are not included in this scope of work.
- Substantial Completion
  - Schedule and attend substantial completion walk through with the Owner, Contractor and Project Engineer. Prepare and distribute substantial completion punch list.
- Final Completion
  - Schedule and attend the final completion walk through with the Owner, Contractor and Project Engineer. Prepare and distribute final completion punch list
- Record Drawings
  - Maintain record drawings and specifications based on site observation and the Contractor's record drawings. This information will be combined and one set of redlined record drawings in PDF and CAD format on CD and will be provided to the Owner at the completion of the project.
- Warranty Inspection
  - Conduct a warranty inspection at eleven months after completion of the project. The project Manager will attend the inspection to review the

project with the Client. Minutes will be developed from the inspection to confirm actions and schedules for corrections should any deficiencies be found.

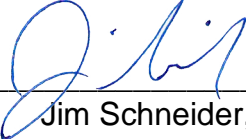
- **Testing and Special Inspections** - The testing and inspection scope is based off time and tests required to satisfy typical specifications related to the below referenced construction components of the project, which may change as more information becomes available:
  - Pipe installation and backfill
  - Reinforced concrete vaults
  - Installation of gates
  - Slip lining of pipes
- On-site Testing Services Soil
  - Evaluate and sample on-site or borrow material to be used during controlled fill and backfill operations.
  - Monitor and evaluate exposed subgrades prior to controlled fill placement or concrete placement.
  - Provide a technician to monitor and perform field density tests on the control fill and backfill operations within construction limits.Concrete
  - Provide an inspector/technician on an as-required basis during concrete operations. Technician will sample and test the concrete for slump, air, and temperature, and will make sets of 3 compressive strength specimens and 1 reserve specimen.
- Laboratory Services
  - Laboratory testing to include visual soil classification (ASTM D-2488), standard Proctor (ASTM D-698), standard Proctor aggregate, aggregate sieve analysis (C-136) and Atterberg limit test (D-4318).
  - Compressive Strength testing of cast concrete cylinders will be performed and results forwarded to client.
- Provide construction consultation including the following:
  - Attend pre-construction conference
  - Respond to fabrication and field questions and proposed changes
  - Make site visits as necessary
  - Prepare plan revisions if necessary
  - Review shop drawings for general conformance with the design concept

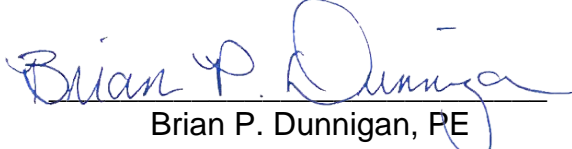


**Budget**

The above scope of services is proposed to be completed on a time and expense basis with an estimated budget of approximately \$162,000. A detailed breakdown of the budget by Phase and Task is included as Attachment B. This fee excludes services for Phase IV, Task 2 – Construction Administration, Observation, and Testing.

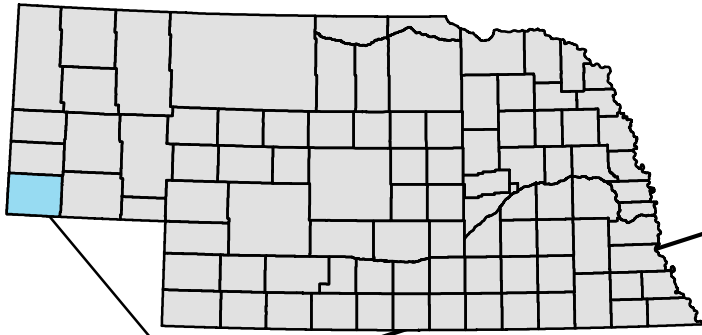
**OLSSON ASSOCIATES, INC.**

By  \_\_\_\_\_  
Jim Schneider, PhD

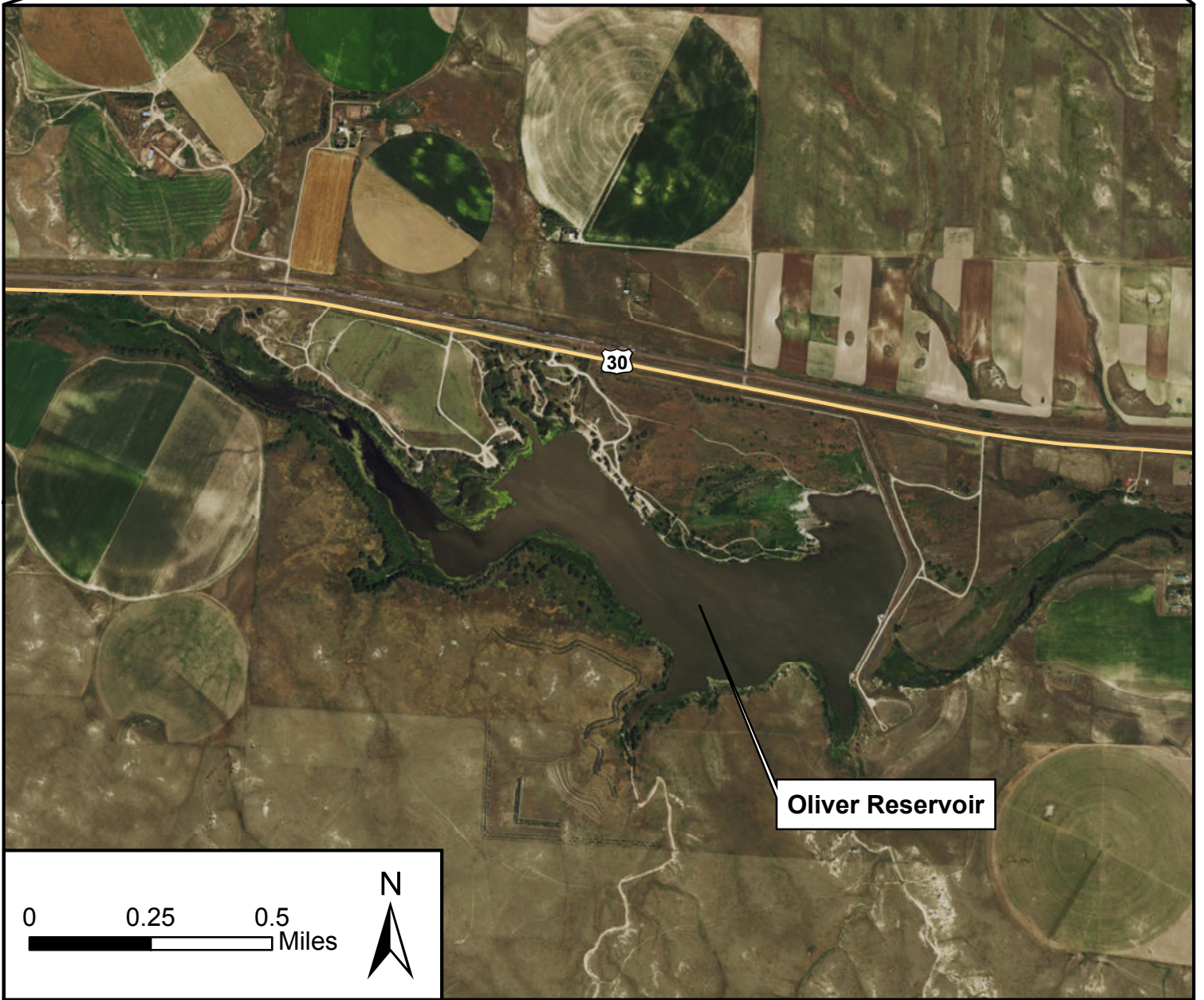
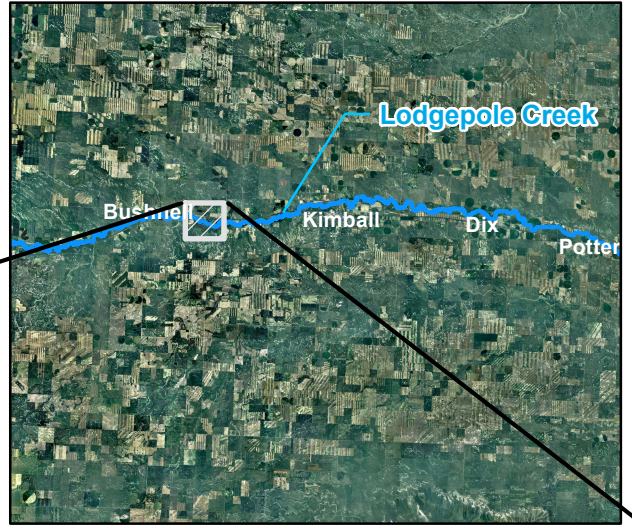
 \_\_\_\_\_  
Brian P. Dunnigan, PE

KIMBALL COUNTY

NEBRASKA



Project Location



Oliver Reservoir

30

0 0.25 0.5 Miles



PROJECT: Oliver Reservoir  
DRAWN BY: CBT  
DATE: November 2013  
PDC Meeting Minutes  
December 7, 2013

Location Map  
Oliver Reservoir, Kimball County



FIGURE

1



**ATTACHMENT B - BUDGET**

Date: 24-Nov-15 Job: Oliver Reservoir Streamflow Enhancement Project		TOTALS			
Phase/ Task	Description of Work	Total Man-Days	Total Labor Fee	Total Expense Fee	Total Fee
Phase 100 Project Management					
Task 101	Project Management	7.50	\$ 9,300.00	\$ -	\$ 9,300.00
Task 102	Project Meetings	3.00	\$ 3,720.00	\$ 1,137.50	\$ 4,857.50
<b>Phase 100 Total</b>		<b>10.50</b>	<b>\$13,020.00</b>	<b>\$1,137.50</b>	<b>\$ 14,157.50</b>
Phase 200 Development of Options					
Task 201	Hydrogeologic and Hydrologic Water Balance Analysis	18.75	\$ 19,000.00	\$ -	\$ 19,000.00
Task 202	Public Participation Process	9.75	\$ 12,138.00	\$ 2,156.25	\$ 14,294.25
Task 203	Topographic Survey	5.24	\$ 5,498.73	\$ 675.00	\$ 6,173.72
Task 204	Environmental Permitting Applications	10.00	\$ 9,200.00	\$ -	\$ 9,200.00
Task 205	Geotechnical Services	43.75	\$ 28,950.00	\$ 17,180.00	\$ 46,130.00
Task 206	Preliminary Design	4.38	\$ 4,200.00	\$ -	\$ 4,200.00
<b>Phase 200 Total</b>		<b>91.87</b>	<b>\$78,986.73</b>	<b>\$20,011.25</b>	<b>\$98,997.97</b>
Phase 300 Design/Plans/Permitting					
Task 301	Well, Piping & Infrastructure Design & Plans; incl. MECH (Spec oversight by WTRS)	35.00	\$ 27,575.00	\$ 9,355.00	\$ 36,930.00
Task 302	Floodplain and NPDES Permitting	5.50	\$ 4,292.00	\$ -	\$ 4,292.00
<b>Phase 300 Total</b>		<b>40.50</b>	<b>\$31,867.00</b>	<b>\$9,355.00</b>	<b>\$41,222.00</b>
Phase 400 Bidding/Construction					
Task 401	Bidding Services	9.38	\$ 7,475.00	\$ -	\$ 7,475.00
Task 402	Construction Administration, Observation, & Testing	-	\$ -	\$ -	\$ -
<b>Phase 400 Total</b>		<b>9.38</b>	<b>\$7,475.00</b>	<b>\$0.00</b>	<b>\$7,475.00</b>
<b>GRAND TOTAL</b>		<b>152.3</b>	<b>\$131,348.73</b>	<b>\$30,503.75</b>	<b>\$ 161,852.47</b>

G:\Lincoln\Admin\LETPROP\Resources\Oliver Reservoir\Fee Estimate for Oliver Reservoir Proposal Final.xlsx\WORKSHEET